



**The participation of Lebanon
in the Prague Quadrennial
of Performance Design
and Space**

June 18-28, 2015

Presentation Document



www.pq-lb.org



DOCUMENT CONFIDENTIALITY STATEMENT

The information in this document is confidential to the person to whom it is addressed.

Any form of reproduction, dissemination, copying, disclosure, modification, distribution and or publication of this material is strictly prohibited.

CONTACT DETAILS

Hadi E. Damien

Curator – National Coordinator
Lebanon in the Prague Quadrennial
of Performance Design and Space

Mobile: 00961 3 03 87 96

Email: hadi.damien@pq-lb.org

Skype: hadi.damien

Website: www.pq-lb.org

ACRONYMS

PQ	Prague Quadrennial of Performance Design and Space
PQ'15	Prague Quadrennial of Performance Design and Space 2015
PQ-LB	The participation of Lebanon in the PQ
PQ-LB'15	The participation of Lebanon in the PQ'15

CREDITS

The participation of Lebanon in the Prague Quadrennial of Performance Design and Space is organized by Lebanese NGO PQ-LB. Founded in 2014, it oversees the whole aspects of Lebanon within the PQ.

PHOTOGRAPHY AND VISUALS COPYRIGHT

PQ	Page 1; 7; 9; 15; 19; 27
PQ-LB	Page 5; 6; 8; 10; 11; 12; 13; 14; 16
Cyrille Najjar	Page 17
Cornelia Krafft	Page 18
AUB Press Club	Page 20
Jalal Khoury	Page 21

OFFICIAL INSTITUTIONS ON BOARD OF PQ-LB'15

1. The Presidency of the Council of Ministers
2. The Ministry of Tourism in Lebanon
3. The Ministry of Culture in Lebanon
4. The Ministry of Foreign Affairs in Lebanon
5. The Embassy of the Czech Republic to Lebanon
6. The Embassy of Lebanon to the Czech Republic
7. The EU Delegation to Lebanon
8. The Lebanese National Commission for UNESCO
9. The Municipality of Beirut
10. Syndicate of Professional Lebanese Artists
11. Office du Tourisme à Paris (Schengen Zone)
12. Live Love Lebanon

WHAT IS PQ?

The Prague Quadrennial of Performance Design and Space is the largest scenography event in the world. Launched in 1967, it takes place every four years in the Czech Republic, and presents the latest trends in scenography and the architecture of performance (and performing) space.

The Prague Quadrennial welcomes thousands of theatre practitioners and explores a wide range of scenography practices – from stage design and costume design to lighting design, sound design, applied scenography, site-specific, urban performance, costume as performance, and much more.

The upcoming 13th edition of the Prague Quadrennial (PQ'15) will take place from 18 to 28 June 2015 and feature exhibitions from more than 64 countries. The main theme is “SharedSpace: Music, Weather, Politics”, an artistic direction that aims to make invisible scenography – environments that deeply affect us, despite being intangible – visible.

Apart from the traditional two competitive Section of Countries and Regions and Student Section, PQ'15 will also include the Performing Space Section, focusing on architecture. Specialties of PQ'15 are the Objects, Makers and Tribes accompanying exhibitions and live events, which will be held in galleries and public spaces in the center of Prague.

Lectures, discussions and SpaceLab workshops with leading world experts from theatre and the arts form a major part of PQ'15. These live events include performances, educational events and residencies to promote an international platform that explores the theory, practice and education of contemporary scenography as an expanded field. PQ also offers a special program for its youngest visitors, youth, and families with children.

PQ'15 will be for the first time spread out among multiple unique locations in Prague's historical city centre, between the Old Town Square and Charles Bridge. The exhibition spaces include the baroque Clam-Gallas and Colloradio-Mansfeld Palaces, Kafka's House, the Gothic St. Anne's Church, the Gallery at the Bethlehem Chapel, and the tunnels beneath the National Theatre.

PQ is a platform bringing together as many as 5,000 theatre professionals and students, as well as more than 50,000 visitors from all over the world.



MINISTRY OF CULTURE
CZECH REPUBLIC

Prague Quadrennial is
organized and funded
by the Ministry of Culture
of the Czech Republic



Realized by Arts
and Theatre Institute



Culture

With the support
of the Culture Programme
of the European Union



The participation of Lebanon
in the Prague Quadrennial
of Performance Design
and Space

SECTION OF COUNTRIES AND REGIONS

Title

UNDO_LATIONS

Themes

Music, Weather & Politics

Curator

Hadi Damien

Designers

Cornelia Krafft

Jad Melki

Arine Aprahamian

Ghaith Abi Ghanem

Description

The National Section of Lebanon is a sensitive exhibition landscape to the motion of the audience. It features a grid of 24 semispheres that sway to the touch of the visitor, who animates the whole pavilion as moving around. The rocking disks carry salt and incense, two organic materials in communion with the site. While salt - a vital, preservative mineral - gives root to the section, burning incense elevates the pavilion in the space. Mirroring semispheres complement the duality, bringing down the height of the surroundings into the disks, embedding the neighbouring countries in the National setting. The Lebanese section touches on the notion of fragility. The movement of the visitor within the responsive landscape alters the layers of salt, uncovering printed and engraved visuals, which unfolds the National exhibition in a performative rocking movement.



SECTION OF COUNTRIES AND REGIONS

What

An interactive 28 m² installation that features recent design works in theatre and performance art done in Lebanon through photography and engraving.

Where

The Prague Crossroads – St. Anne's Church
Balcony where the organ used to be placed.

Neighboring countries: Bulgaria & Japan

Built in the 14th century, this Gothic church is located in the heart of the Baroque complex of a former Dominican convent. After the convent was dissolved at the end of the 18th century, the church premises served as, among other things, as a printing press for the publisher of the Journal of the Austrian Royal and Imperial Postal Service, and a paper store. Since 2004 the church premises have been utilized by the Vize 97 Foundation set up by former Czech president Václav Havel and his wife Dagmar. Vize 97, which supports the celebrated conference Forum 2000, uses the space of the church as a spiritual, cultural and intellectual center called Prague Crossroads. The former convent complex itself is currently used as a technical facility by the National Theatre.



STUDENT SECTION

Title

A Trail of Ten

THEMES

Music, Weather & Politics

Curator

Hadi Damien

Designer

Studio GHAITH&JAD

Description

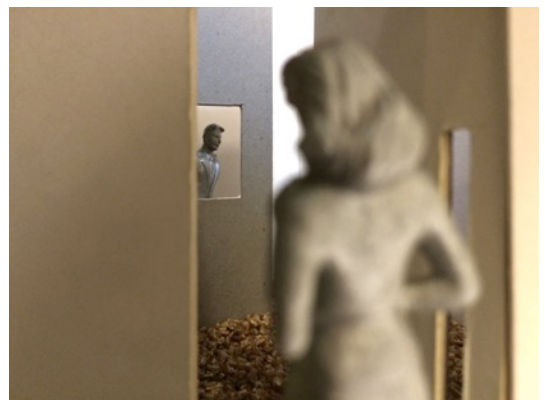
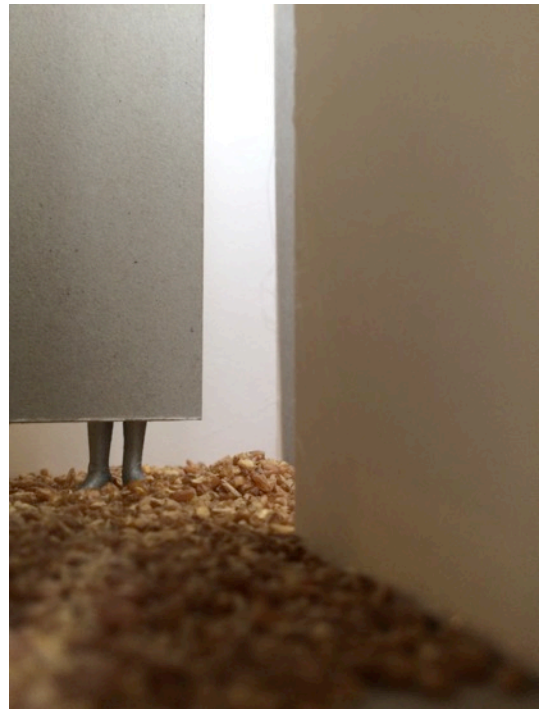
The Lebanese Student Section is a spatial experience that breaks the linear rhythm of Kafka's House consecutive exhibition rooms. It distorts the visitor's sense of orientation, warps the perspective of the established repetitive rooms and throws the visitor in a space dissected by planes.

At each of the room three entrances, the visitor is faced with a blank oblique partition that hides what is within. Upon following the path traced by these planes, the visitor finds himself/herself walking along other blank partitions that feature cutouts, kind of frames that show parts of persons walking behind.

This playful maze invites the visitors of the section to observe each other, creating a living exhibition layer.

Delving deeper into the room, the visitor goes the length of the partition walls and encounters the second exhibition layer: a series of images that depicts student performances and collaborations, hung on the existing walls of the house. The mute partitions emerge from an organic bed of fallen cedar leaves that condenses the experience and links it to the Lebanese natural identity. The framed moving elements that border the walk on Lebanese terrain, in the abstract cedar forest and through its aroma, add much intrigue to the promenade.

The section design reflects on the notion of "curiosity", a Lebanese trait often highlighted in hospitable, welcoming neighbourhoods and citizens that are fertile ground for venturing and discovering "social finds and treasures". In these confined neighbourhoods and small villages, inhabitants know each other and form a big family/community where it is pretty difficult for people to act without others being real-time witnesses. Thus, the section creates a layer of intimacy between the visitors who manage to observe each other.



STUDENT SECTION

What

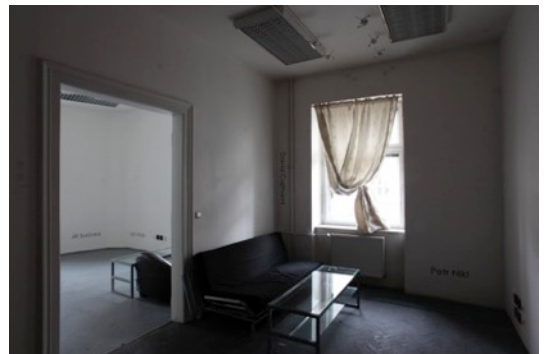
An interactive 18 m² layered installation that features recent design works in theatre and performance art done in colleges/schools in Lebanon (LU, ALBA, USJ, AUB, LAU, NDU, USEK, Kafa'at, etc.) through photography.

Where

Kafka's House
First Floor

Neighboring countries: Taiwan & USA

The house in which writer Franz Kafka was born stood on the periphery of what was then the Prague Jewish ghetto. The house was built in the first half of the 18th century and was originally intended for use by the Benedictine monks administering the neighboring Church of St. Nicholas. When Emperor Joseph II had the monastery dissolved, the building was bought by the city for use as an archive and storage. It was later used by a theatre and for apartments. Franz Kafka was born in the house in 1883, although only two years later his family moved to Wenceslas Square. Several years later the house was damaged by fire and demolished – the only remaining element was the entrance portal, which was incorporated into the new Neo-Baroque apartment block. The building is currently used for cultural and social events.



PERFORMING SPACE

Title

Mood to Matter: A Spatial Materialisation of the City

Themes

Music, Weather & Politics

Curator

Hadi Damien

Designer

Studio GHAITH&JAD

Description

"Mood to Matter" is a space project that features two city tours and an exhibition in progress. It is an architectural endeavour that links Czech and Lebanese cities through similar spatial moments, associated to architectural materials.

Before heading to Prague, the city tour conductors will be roaming the streets of Lebanon, taking photographs of spatial moments. Each one of these pictures conveys a specific moment in materiality, scale, context, sound, climate, light, political representation, etc, to which a material related to architecture will be associated. The assembled materials from this city tour are then representative of a specific spatial moment in Lebanon.

The composition will be displayed in the Space Exhibition as reference for the participants who will embark on a city tour in Prague to search for similar experiences, photograph them and associate them with materials. Pictures of streets, angles, buildings, sculptures, feelings from Lebanon, as well as multimedia material (sound recordings, audio guidelines, music, songs) will guide the city tour participants in their search. It is about simulating the senses and discovering hidden gems in the city.

The final exhibition is a series of material compositions, depicting each a moment in space both in Prague and Lebanon. The exhibition of assemblages brought from Lebanon will then become one about moments in Prague.

The tour is an interactive experience, a sort of workshop-performance with the participant as key element that forges the bond of spatial experiences in both countries.



TRIBES

Title

It's a plas-tic

Designer

Hans Harling

Description

This tribe reflects on beauty mania and the plastic surgeries people are fond of. The tribe members are dressed alike, in skinny catsuits and high heels.

Breasts are flattened to create a gender identity confusion and highlight how universal plastic interventions have become.

The head is oversized with layers of Botox and features luscious lips that cover much of the face.

They are plas-tic. Beauty tics.

What

A 40-minute walking exhibition of an extreme costume in Prague, through a predefined route set by the PQ'15 organizers.

Featuring 4+ performers (the tribe) dressed in the same costume and displaying the same behavior.

Where

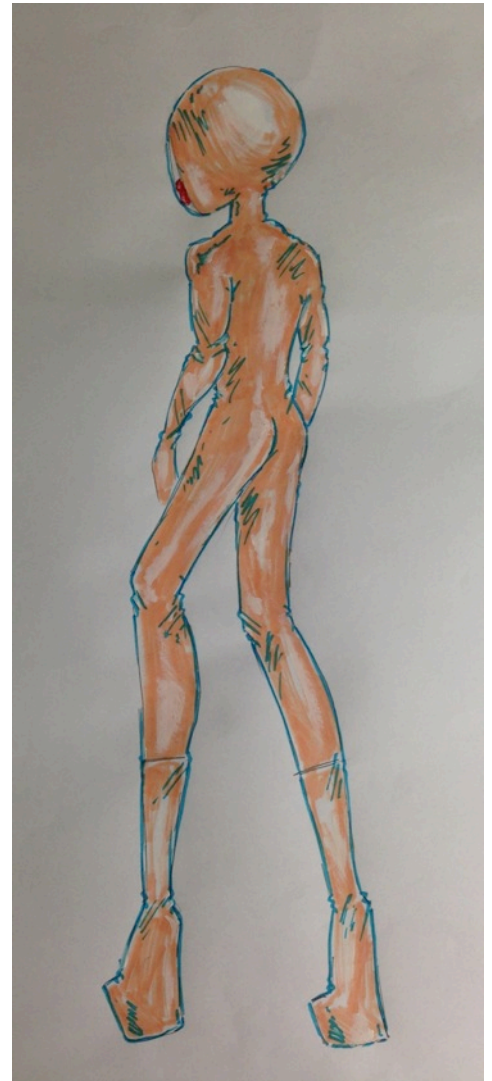
Center of Prague

Metro

Supermarket

Theatre

Museum



TRIBES

Title

Blow their Mill

Designer

Hans Harling

Description

This tribe wears a pinwheel for a face. When the wind is blowing, the pinwheel turns and the tribe moves forward. If this weather condition is not met, passers-by blow in the face of the performers to bring in the action, and the audience intervention becomes the motor that unfolds the performance. A statement that highlights the machine alienation: if the pinwheel is not active, the tribe cannot keep going.

What

A 40-minute walking exhibition of an extreme costume in Prague, through a predefined route set by the PQ'15 organizers.

Featuring 4+ performers (the tribe) dressed in the same costume and displaying the same behavior.

Where

Center of Prague

Metro

Supermarket

Theatre

Museum



TRIBES

Title

Lay Within

Designer

Hadi Damien

Description

Inspired by the Calla Lily flower, this tribe members are wrapped in a white drapery with a reflective inside that mirrors the surroundings, bringing in the world within the performer.

What

A 40-minute walking exhibition of an extreme costume in Prague, through a predefined route set by the PQ'15 organizers.

Featuring 4+ performers (the tribe) dressed in the same costume and displaying the same behavior.

Where

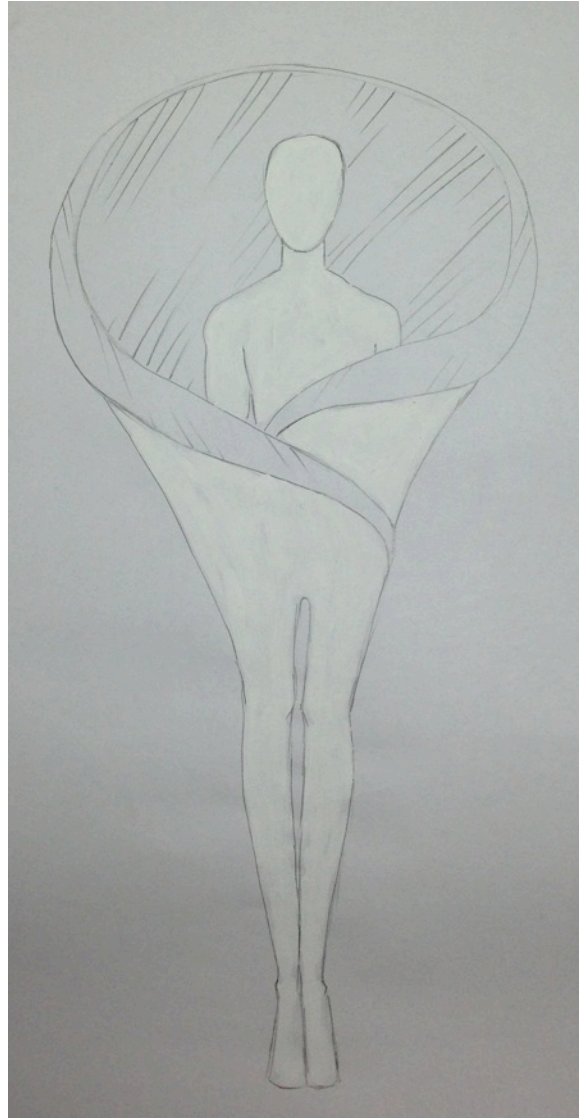
Center of Prague

Metro

Supermarket

Theatre

Museum



MAKERS

Title

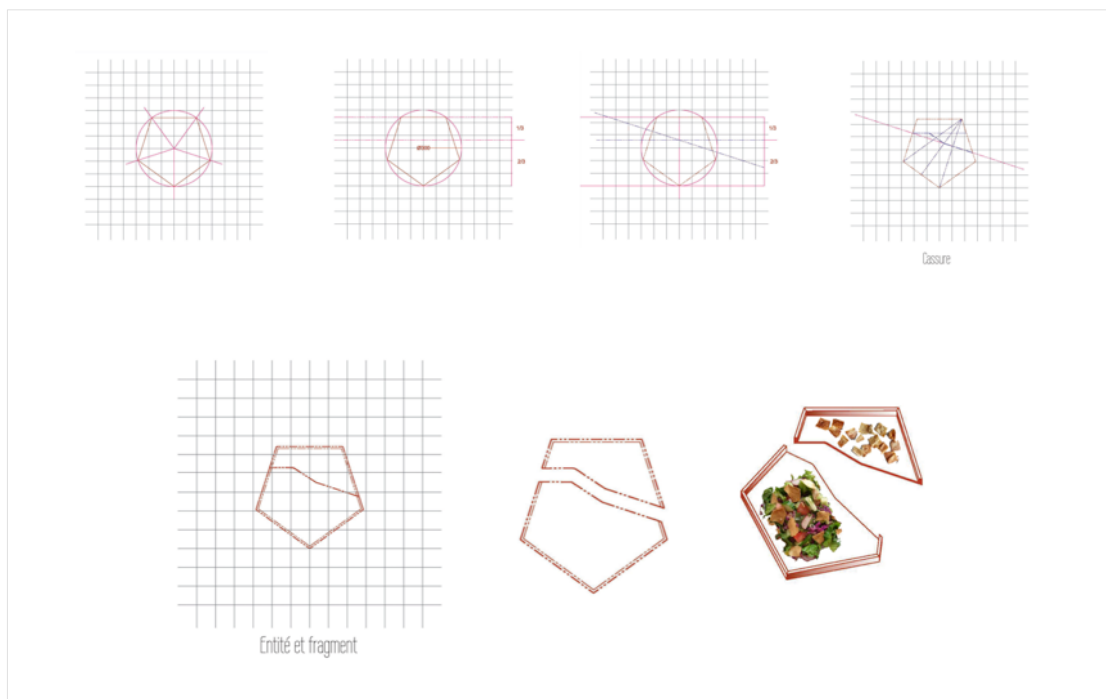
Fatt

Designer

Miriane Zgheib

Description

"Fatt" is a kitchen performance based on the Fattush, a Levantine salad made from an assortment of greens and vegetables mixed with pieces of pita bread. It draws inspiration from breaking bread and takes root in the contrast entity/fragment. A duality reflected on Greek word "Pita" that stands for solid, resistant, and Arabic derived word "Fatt" that means "concasse" (crushed). The shared, communal Fattush is served as a mezze in a clay receptacle and is one third of bread and two-third of greens, a ratio that will be driving the whole performance.



MAKERS

What

Instead of a classical theatre stage, black box or site-specific stage, the Maker is given a theatrical restaurant surrounding (a nostalgic machinery food chain environment) in an art gallery for expression through food.

It is a theatrical food and dining experience design in the presence of an audience in order to explore not only the design of food itself, but also the way it is prepared, presented, shared and played out. It is a discovery of how the Makers draw, think, work and develop ideas, and what the process of creating a new work looks like. The preparation and development is as important as the making of the food.

Where

Bethlehem Chapel – Lapidarium

The Bethlehem Chapel is a national cultural monument and the first preaching chapel in Europe. It was founded in 1391 for the purpose of preaching in the Czech language. Nowadays is most closely associated with the preaching of Master Jan Hus in the years 1402-1413. From the very beginning the chapel was a centre of efforts to reform the church and progressive trends within Prague University. Most of the chapel was demolished in 1786; however, in the 1950s it was reconstructed to approximately its original appearance according to a project by the architect Jaroslav Fragner, which utilized preserved wall fragments. Since 1987 the chapel has been administered by the Czech Technical University in Prague, which uses the chapel as its Grand Aula. The historic spaces of the Lapidarium, located in the basement of the Bethlehem Chapel, are currently used to host cultural and social events.



OUTDOOR PERFORMANCE

Title

Send Down the Basket

Description

Every day, when the trumpeter announces 2 pm from the tower of Charles Bridge toward Malá Strana, a performer will send down a basket similar to those we used to lower from the balconies. Here, passers-by act as a grocer: various notes in the basket will invite them sometimes to give out a personal element, sometimes to trade goods from the basket, etc. A performance that questions space nostalgia and people's daily concerns: "will there be food in the basket today?"

Where

Charles Bridge's tower toward Malá Strana
June 18-28, at 2 pm.



SOUND KITCHEN 2015

Title

The Black Box: If Buildings Could Speak.

Designer

Cyrille Najjar

Description

A sound experimentation that transforms a room into a percussion box, therefore questioning the building and then the city through resonance.

What

A project where 50 sound artists present compositions, sound art, sound installations and sound design pieces with emphasis on experimental music and sound for theatre, installations, live performances and exhibitions. An exploration of the multi-disciplinary relationship between musical composition, text, space and the visual image. Co-organized in cooperation with the OISTAT Sound Design Working Group.

Where

Clam-Gallas Palace

This Baroque palace was named after its last aristocratic owners, the Gallas (later Clam-Gallas) family. General Matthias Gallas acquired the palace in 1634 as confiscated goods after helping to organize the assassination of the powerful military leader Albrecht von Wallenstein and his officers, including the palace's original owner. In 1714 the leading architect J. B. Fischer von Erlach was charged with refurbishing the palace in the then fashionable High Baroque style, with statuary created by Matthias Bernard Braun. During the 19th and early 20th centuries the palace was put to a variety of uses: as offices, apartments and, at one point, to store hay. From 1945 onwards it housed the Prague City Archives, part of which is still located in the palace to this day. The palace is currently used for social and cultural events.



WORKSHOP

Title

Performance Skins & Fiber Spaces
created out of Luffa

Conductor

Cornelia Krafft

Description

A two-day workshop for international students to explore and experiment leefe, the versatile organic and semipermeable fiber material as a base for performance skins, installations and action spaces that are sensitive to weather conditions. Participants will conceptualize a group performance that uses and assembles the material on their bodies and in large scale for a public performance around and in the Vltava river.

What

Workshop set in the frame of Space Lab,
the educational component of the PQ.

Where

The Theatre Faculty of the Academy of Performing
Arts in Prague (DAMU)
The Vltava River
An island in the Vltava River



SEMINAR

Title

Performance Design Criticism Seminar

Conductor

Professor Arnold Aronson (USA)

Diana Damian Martin (UK)

Participant

Hadi Damien

Description

A five-day seminar led by two prominent figures of the field that targets thinking performance through scenography and critics analysis through papers and articles with review submissions in theatre newspapers.

Co-organized by the Association of Czech Theatre Critics

What

Seminar set in the frame of Space Lab, the educational component of the PQ.

When

June 19 to 23, 2015

Where

The Theatre Faculty of the Academy of Performing Arts in Prague (DAMU)



BOOK SIGNING

Title

Mute Movements

Description

First regional performance art book that documents the performance art journey throughout Beirut 2009 – 2014 with students and alumni of the American University of Beirut
Choreographed by Cornelia Krafft.

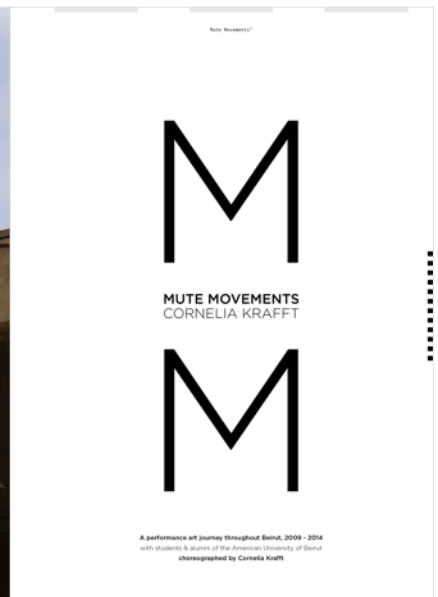
Nominated for Best Scenography Publication Award.

When/Where

In the frame of the reception of the Lebanese Embassy.

Bookshop

Mute Movements is also sold at the bookshop of the PQ.
Receipts cover production of the book and its shipping to Prague.



PQ TALK

Theme

Talk on imaginary in scenography
& limits of this discipline featuring extracts from
Lebanese plays with a distinctive scenography.

Convenor

Jalal Khoury

Presentation

Promoter of the political theatre in the 60s Lebanon.

First Lebanese playwright to be translated
& performed abroad.

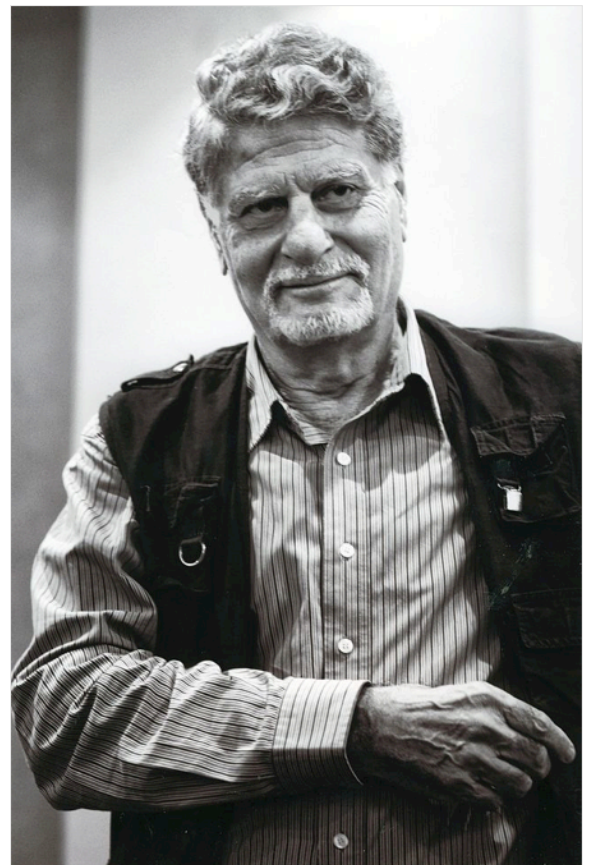
Author of papers on theatre and arts, as well as an
amount of scenic adaptations and theory critical
writings.

Ex-president of the International Theatre Institute
Permanent Committee of the Third-World
(1973-1977).

University professor

When/Where

In the frame of the reception of the Lebanese
Embassy



MARKETING & VISIBILITY INITIATIVES

Visual Identity of PQ-LB

- Logo (short, long and vertical versions)
- Type font
- Color scheme
- PQ-LB'15 visuals, graphics and colors.

Prints

- Posters on display in cultural centers and selected bars, pubs and restaurants in Lebanon
- Posters sent to the Lebanese Embassy in the Czech Republic for dispatch in cultural venues and selected bars, pubs and restaurants
- Flyers dispatched through the various partners
- Flyers sent to the mailing list
- Billboards

Digital

- Street LED Screen

Online Presence

- Website
- Facebook
- Instagram
- Twitter
- YouTube
- Partners newsletters
- Google & Facebook Ads

Editorial Coverage

- Newspapers, magazines, portals, radio and TV programs
- In Lebanon and in the Czech Republic with international outreach
- Generic media outlets & specialized ones

PQ-LB'15 Booklet

- A comprehensive publication distributed through both the National and Student Sections and in formal happenings.

Postcards

- Distributed in Beirut & Prague to promote the Lebanese participation featuring the schedule

LAU International Theatre Festival Exhibition

- June 10-14, featuring snippets from the PQ-LB'15 Student Exhibition

Lebanese Embassy Reception

Photo & Video Coverage

POST PQ'15 ACTIVITIES

Postcards

Mailed in Beirut & to Prague as a wrap-up material
Customized content for various occasions
With pictures from PQ-LB'15

Video documentary of PQ-LB'15

Available on a DVD and online

PQ-LB'15 Booklet

A revision of the previous publication with photography and DVD additions
Sent to partners and PQ archives

Photo Exhibition of PQ-LB'15

PQ-LB'15 in the PQ Touring

UNDO_LATIONS, the Lebanese National Exhibition as part of the PQ Touring Exhibition

PQ-LB'15 Touring Exhibitions in Lebanon

Display of both the National and Student Exhibitions in cultural centers in Lebanon
(after PQ Touring Exhibition is over)

PQ'15 Participating Countries Come to Lebanon

Hosting of participating countries exhibitions and performances
to foster export of Lebanese productions

PQ Satellites in Lebanon

Hosting PQ-related projects and educational programs in Lebanon
to advocate exchange and theatre collaborations

Preparation of PQ-LB'19

MAIN EXPENSES

Exhibition Space Fees

Production Fees (exhibition & project execution – including exhibition booklet and visual identity)

Exhibition Shipment

Visa Fees

Round-Trip Flights

Extra Luggage

Internal Transport (from and to airport + metro)

Local Phone (Czech Line)

Hotel

Per Diem

PQ Accreditation

Video/Photo Coverage & Editing

PQ-LB'15 TEAM

1	Curator / National Coordinator	Hadi E. Damien
2	Exhibition Designer / Workshop Conductor	Cornelia Krafft
3	Exhibition Designer / Performing Space	Ghaith Abi Ghanem
4	Exhibition Designer / Performing Space	Jad Melki
5	Exhibition Designer / Performing Space	Arine Aprahamian
6	Tribes Designer / Performer	Hans Harling
7	Makers Designer / Performer	Miriane Zgheib
8	Sound Kitchen Designer	Cyrille Najjar
9	Performer	Lama Hteit
10	PQ Talk	Jalal Khoury
11	Photographer	Ad Achkar
12	Videographer	Paul Jamhuri

