



The Technical University of Liberec has a tradition of research in close cooperation especially with the textile and automotive industries. Our collaboration has guaranteed that our graduates win excellent work placement.

Prof. Dr. Ing. Zdenek Kus | Rector



Internationalization both in research and teaching is a priority to us. We guide our students to succeed at home and abroad and encourage our researchers to reach out and share their results with global partners.

Assoc. Prof. PhDr. Sona Jandova Ph.D. | Vice Rector

The Technical University of Liberec in the north of the Czech Republic is only 100 km from Prague and 300 km from Berlin. While connected globally, the University understands its responsibility as a uniquely located regional centre and it engages in cross-border projects with German and Polish institutes of higher education.

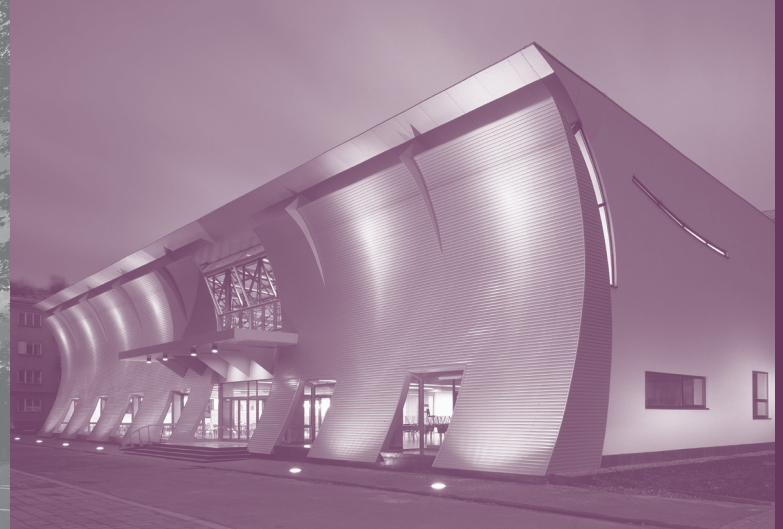
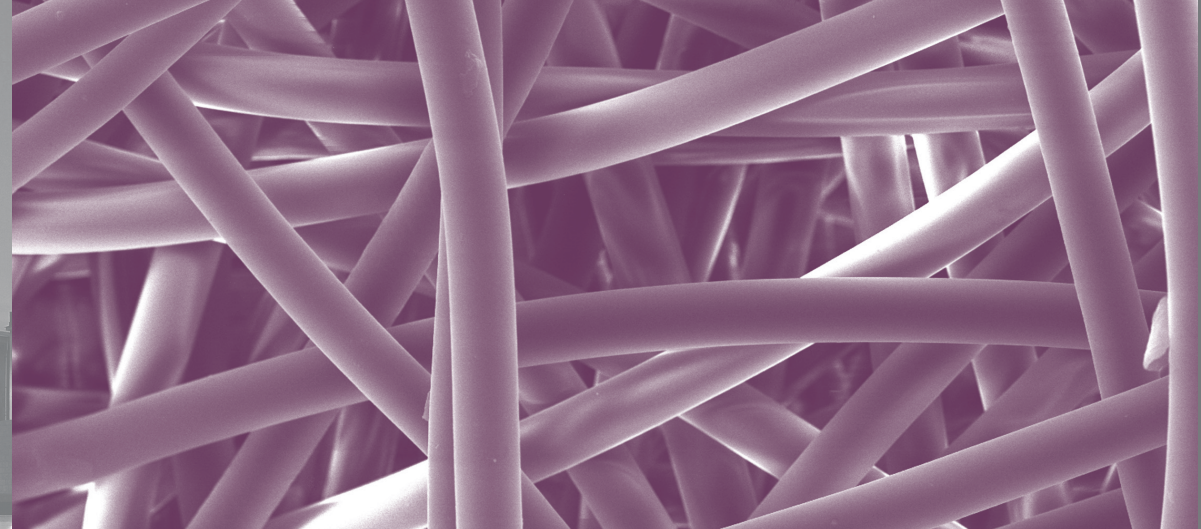
Top-level results in research and science, excellence in teaching and interdisciplinary collaboration have stood for the Technical University of Liberec since its foundation in 1953. More than 8,000 students study at six faculties and one specialized institute. Among the enrolled students, there is a continuously growing number of students from various countries every year.

TUL alumni have succeeded in various job positions in the Czech Republic, Slovak Republic, United Kingdom, Turkey, Germany, Spain and the United States, to name just few.

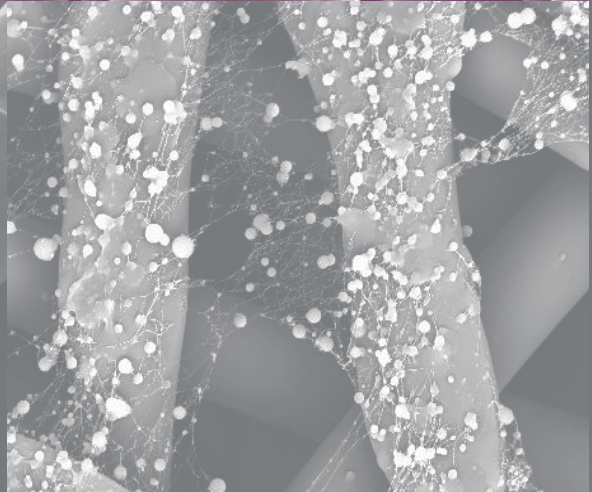
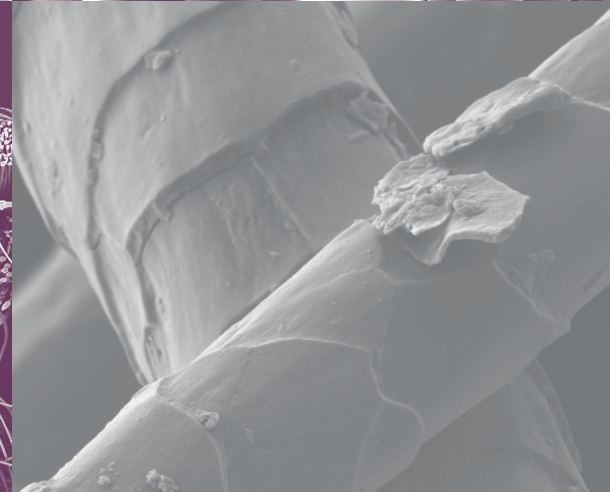
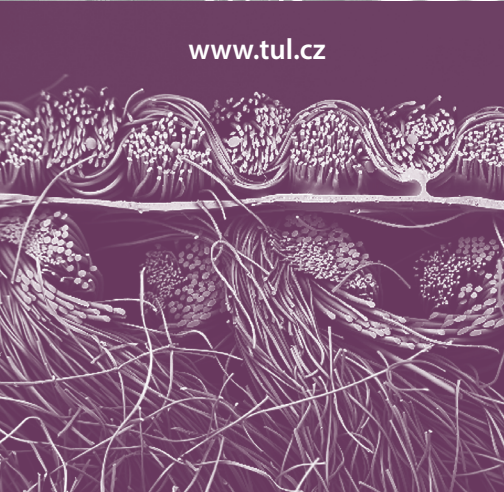
**PRIDE OF THE TECHNICAL UNIVERSITY OF LIBEREC**

*The Institute for Nanomaterials, Advanced Technologies and Innovation*

One of the best in the region, the Institute specializes in interdisciplinary research, turning joint research and development projects in the area of material research and competitive engineering into reality.



www.tul.cz



TECHNICAL UNIVERSITY OF LIBEREC

The University has taken complex steps to make the campus and campus life truly international and to make the adaptation for international students easier. There are various support mechanisms including the Orientation Week, the Buddy system (partnering an international and a local student) and Czech language courses for foreigners that enrich the experience of studying in Liberec.

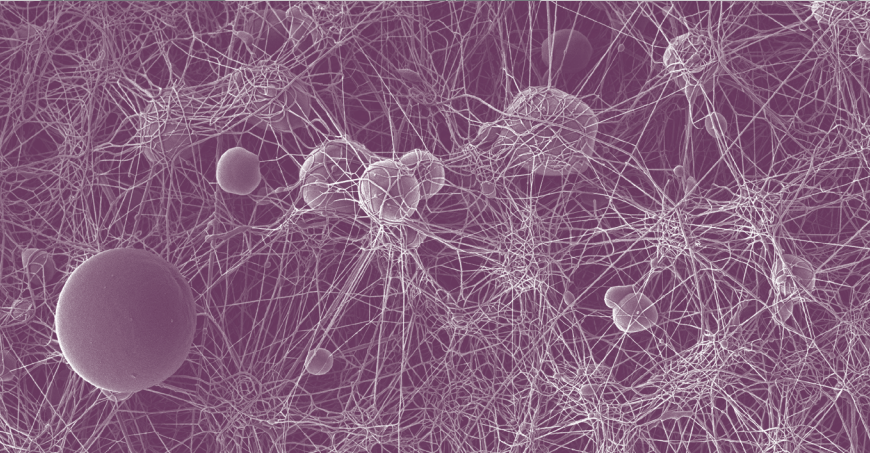
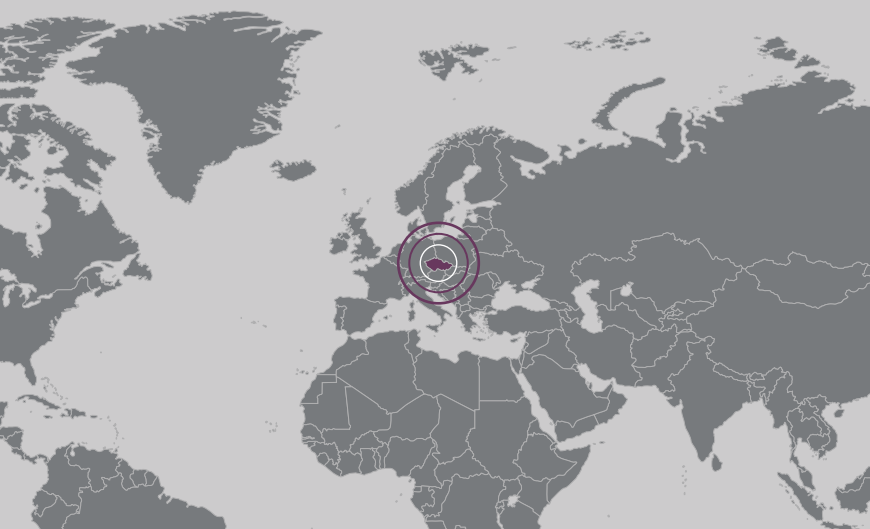
Students work in first-class laboratories and they have access to the well-stocked university library. All study programmes (including those offered in English) are accredited by the Ministry of Education, Youth and Sports, Czech Republic.

Our halls of residence offer affordable accommodation and have received several national awards. Our university provides outstanding opportunities for athletes and sports enthusiasts. Several of our alumni have represented the Czech Republic at the Olympic Games.

**MOST SIGNIFICANT SCIENTIFIC FOOTPRINTS OF TUL RESEARCHERS**

- Environmental remediation with the help of nanotechnology
- Biomedical applications of nanofibres
- Chameleon fabrics and smart fabrics with built-in optical fibre
- The Nanospider – electrospinning
- Innovation for automotive industry

PROFILE OF THE TECHNICAL UNIVERSITY OF LIBEREC



### CONTACT US

#### TECHNICAL UNIVERSITY OF LIBEREC

Studentská 1402/2 | 461 17 Liberec 1 | Czech Republic | Europe  
 international@tul.cz | www.tul.cz

Contact us via: [facebook.com/TechnicalUniversityLiberec](https://www.facebook.com/TechnicalUniversityLiberec) | [LinkedIn](#)

BACHELOR, MASTER AND PH.D. PROGRAMMES TAUGHT IN ENGLISH

## FACULTY OF MECHANICAL ENGINEERING

### Master:

- » Mechanical Engineering, Engineering Technology and Materials
- » Mechanical Engineering, Machines and Equipment Design
- » Mechanical Engineering, Innovation Engineering
- » Mechanical Engineering, Applied Mechanics (5 years)

### Ph.D.:

- » Mechanical Engineering, Applied Mechanics
- » Mechanical Engineering, Manufacturing Systems and Processes
- » Mechanical Engineering, Material Engineering
- » Engineering Technology, Engineering Technology
- » Machines and Equipment, Machines and Equipment Design

## FACULTY OF TEXTILE ENGINEERING

### Bachelor:

- » Textile Technologies, Materials and Nanomaterials
- » Textile and Fashion Design

### Master:

- » Textile Engineering, Clothing and Textile Engineering
- » Textile Engineering, Nonwoven and Nanomaterials
- » Textile Engineering (5 years)

### Ph.D. :

- » Textile Engineering, Textile Techniques
- » Textile Engineering, Textile Techniques and Materials Engineering

## FACULTY OF ECONOMICS

### Bachelor:

- » Economics and Management, Business Administration
- » System Engineering and Informatics, Information and Communication Management (NISA)

### Master:

- » Economics and Management, Business Administration

### Ph.D.:

- » System Engineering and Informatics, Economics and Informatics

## FACULTY OF ARTS AND ARCHITECTURE

### Master:

- » Architecture and Urban Design

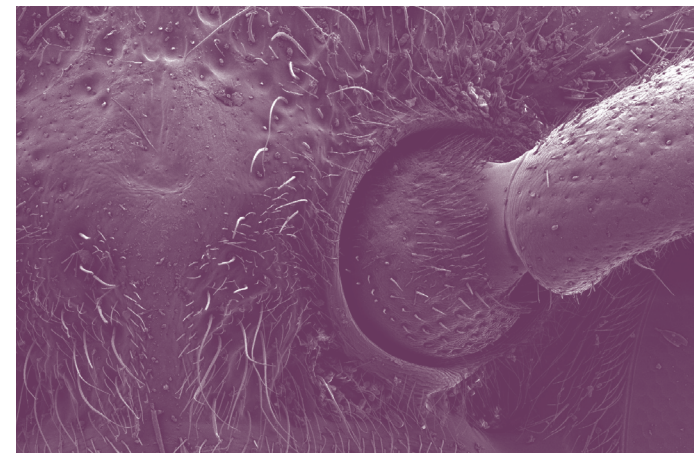
## FACULTY OF MECHATRONICS

### Master:

- » Electrical Engineering and Informatics, Mechatronics  
 (Dual degree with Zittau/Görlitz University of Applied Sciences, Germany)

### Ph.D.:

- » Electrical Engineering and Informatics, Technical Cybernetics



FEE STRUCTURE

Faculty	Bachelor and Master (USD/AY)	Ph.D. (USD/AY)
Faculty of Mechanical Engineering	4,000	2,000
Faculty of Textile Engineering	3,000	4,000
Faculty of Economics	3,500	3,500
Faculty of Arts and Architecture	5,000	-
Faculty of Mechatronics	5,000	5,000

## OUR PARTNERS IN RESEARCH AND TRAINING

- » ŠKODA AUTO
- » DENSO MANUFACTURING CZECH
- » ŠKODA MACHINETOOL
- » ČKD NOVÉ ENERGO
- » ELMARCO
- » PRECIOSA
- » BOSCH Diesel
- » PARAMO



## THE LIBEREC REGION

The north of the Czech Republic is known for textile, glass design and production, chemical and automotive industries, and for coal and uranium mining. Ever since its foundation in 1953, the Technical University in Liberec has shaped its research focus on the needs of these industries, strong ties to the local companies and their impact on the local environment and ecology. The region is also rightly known as heaven on earth for tourists, skiers, lovers of nature, and history enthusiasts.

The present day town of Liberec with its multicultural population showcases the common Czech and German heritage (the first notes on the town date back to 1352) and displays active relations to its European neighbours. The town offers a unique architectural and cultural cityscape, theatres and music clubs, cinemas and diverse sports clubs – all below the picturesque mountain of Ještěd. You can navigate the city on foot or bicycle or use the affordable splendid public transportation system. It is a lush green gem with fresh air and clean environment with basically no pollution.