

LIGHT REMOVES

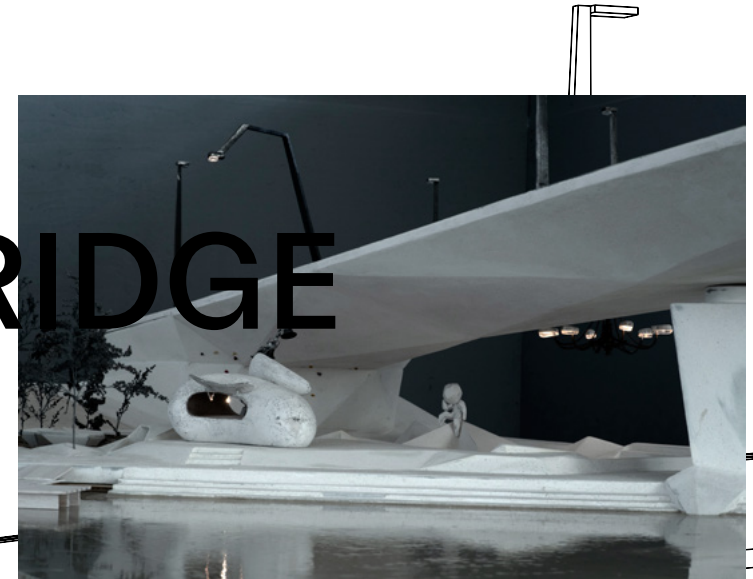
DARKNESS

**THE PROJECT FOR
THE NEW PRAGUE BRIDGE**

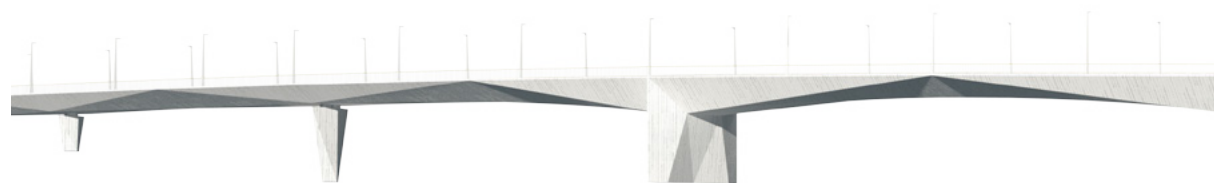
**SCULPTURAL AND
ENVIRONMENTAL
INSTALLATION**

BY KRIŠTOF KINTERA

DVORECKÝ
BRIDGE



The City of Prague is building a new bridge to interconnect Prague's Podolí and Smíchov districts. Designed by **A6 architectural studio in collaboration with leading Czech contemporary artist Krištof Kintera**, Dvořecký Bridge will be open to public transport, cyclists and pedestrians and will feature artworks on each side, creating a space for relaxation at Vltava River for thousands of Prague citizens and tourists.



SMÍCHOV
RIVERBANK

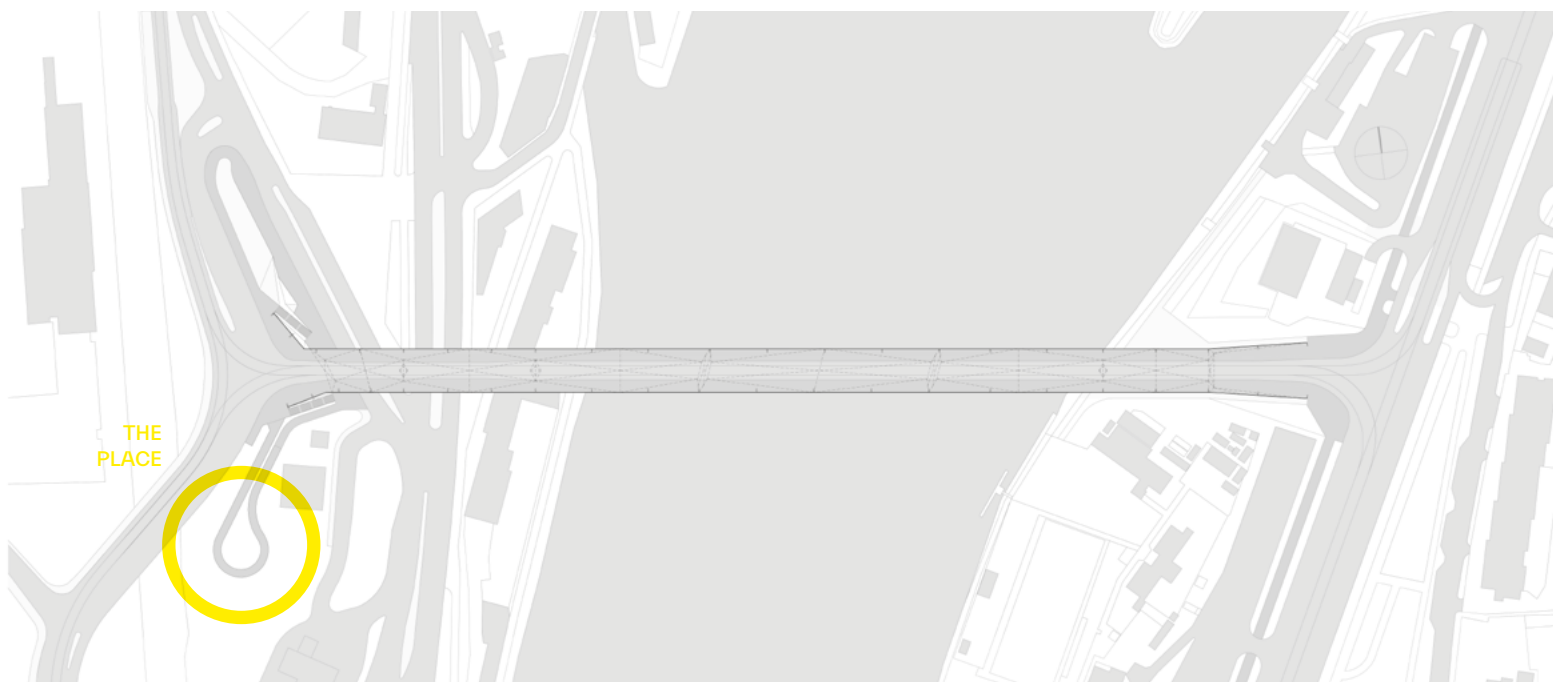
LIGHT
REMOVES
DARKNESS

PODOLÍ RIVERBANK

UNDER THE BRIDGE
- SCULPTURAL
ENVIRONMENT FOR
ACTIVITIES

The Prague City Hall is the investor and contract owner. The artwork LIGHT REMOVES DARKNESS will include dozens of streetlamps from around the world. The aim is to create a light installation – a kind of a botanical garden of streetlights which have illuminated the public space in all corners of the world and which have different or even rare forms. We would like to ask you to help us realize this vision. We are looking for streetlamps to become part of this grand and unique light installation.

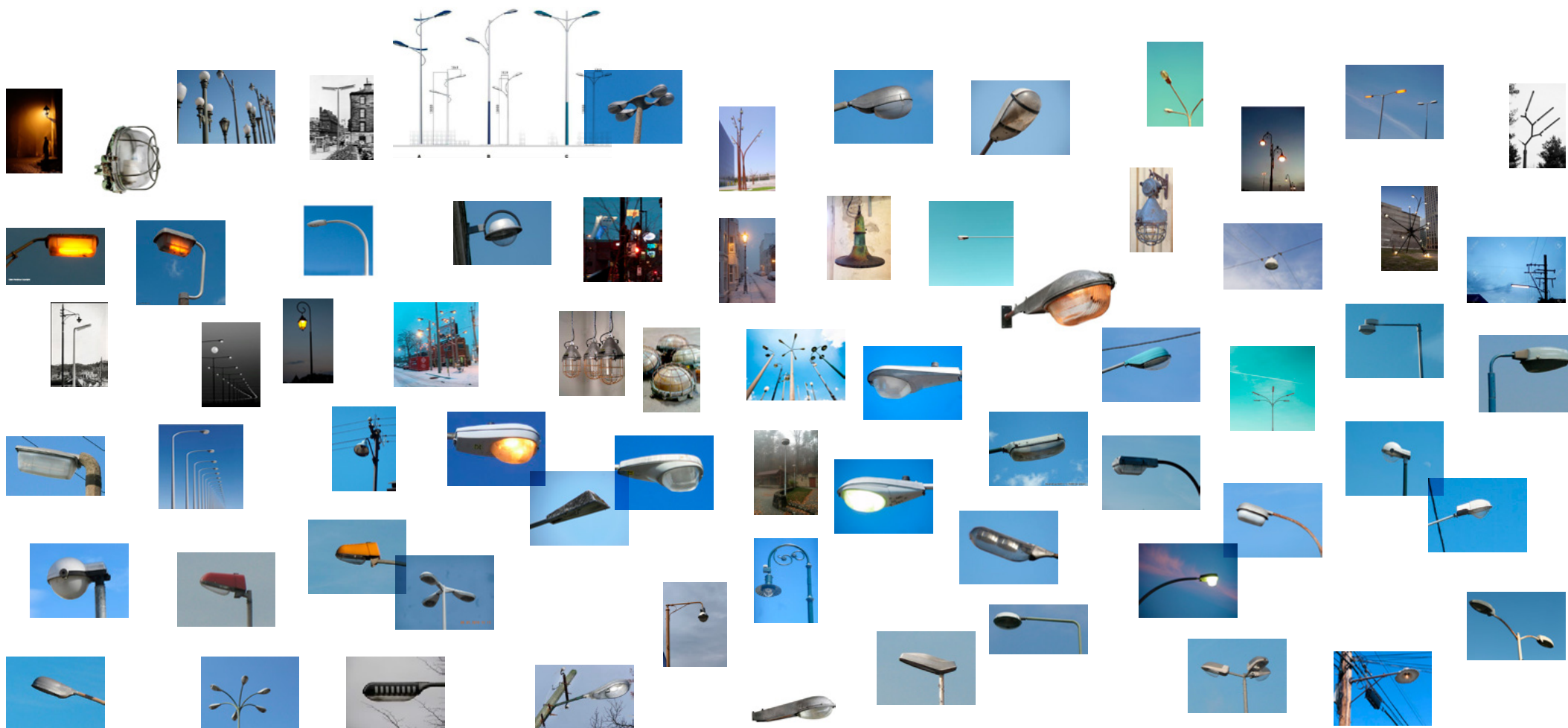
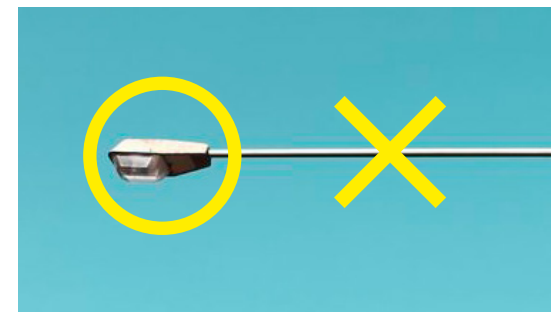
The City of Prague primarily addresses its partner cities as well as many other places and institutions across the world. We are inviting you to become fellow creators of a new artwork for one of the key contemporary structures in the city of Prague.





We will fill the garden of lights with
60 to 80 streetlamps from around the world.
 We are seeking help with the localization of
 these lamps, both current and historical ones.
**We only need the lamps without the
 lampposts.**

We would like to ask you to help us find these
 lamps. **We will appreciate you contacting us or
 pre-arranging for us.**



We will completely manage the transportation process. We will order and pay for the courier service and packaging. We will buy the lamps if necessary. No costs will be incurred to our partners at the given localities.

WHAT WE OFFER

Being part of a big art project along with dozens of partner cities across the world. Promoting the place and state of the lamp's origin within a world rarity - the unique project of an herbarium of streetlamps - LIGHT REMOVES DARKNESS.

We will appreciate your help.

Thank you for your precious time and energy.

CONTACT

Jana Ptáčková
Production Coordinator
+420 602 212 545
ptackoja@gmail.com



The art project has two parts - each side of the bridge will feature a specific environment with different functions.

Podolí Riverbank is now already a frequented hub of leisure activities. Dvorecký Bridge will provide natural shelter and create a platform for all kinds of activities: a theater arena, a café, a climbing wall, a skate park, a base for cold water swimmers and more. The space under the bridge, which otherwise tends to be condemned to deterioration and decline, will become a popular meeting point.

Smíchov Riverbank, which will feature the light installation **LIGHT REMOVES DARKNESS**, is harder to access and seems to be fatally enclosed by the traffic junction of the adjacent roads. However, this is why an unexpected and unique oasis can be formed here. The place is visible from afar, from all types of public transport, and can be seen as a gate to the capital city. The cycling loop line will become a scenic route surrounded by a unique light collection; which, like a botanical collection, shows the diversity of the typology of street furniture from across the world. The lamps will be controlled by a program gradually changing the intensity of the illumination of the individual lamps and their groups which will form a cohesive whole with full-grown trees, bushes and other flora, creating a magical, contemplative environment in the middle of a busy city. The garden will include labels marking the country and city of origin of the individual exhibits. Thus, a world rarity - a streetlamp museum - will be born.



Krištof Kintera (1973) is a leading Czech sculptor and visual artist whose work was exhibited across the world and is represented in a number of collections in the Czech Republic and internationally. Kintera presented solo shows at Tinquely Museum in Basel, Kunsthal Rotterdam, Ikon Gallery in Birmingham and Maramotti Collection in Italy among others.

In 2017, he presented his extensive exhibition *Nervous Trees* at Galerie Rudolfinum which was seen by a record number of 162.000 visitors. His artworks are shown in dozens of galleries across the world. His upcoming exhibitions will be presented in Padua, Regensburg and Berlin.

kristofkintera.com

