

Catalogue

Czech companies interested in business partners or/and customers

2011

	Pages:
Heating technic	2
Ecology and savings	3,4,5,6,7,8
Energetics	9
Electronics.....	10
Cars – converting.....	11
Bohemia Crystal	12,13
Furniture.....	14
Stone (interior, exterior)	15



Postal address:

NERIA a.s.

Vinařská 244/1
CZ-693 01 Hustopeče
Czech Republic

Tel: +420 519 361 420

Fax: +420 519 361 425

email: stachovic@neria.cz

http: www.neria.cz

IČO (identification number): 25307983

DIČ (tax identification number): CZ25307983

**Czech producer with the long-termed tradition of the
heating technics and radiators, especially of:**

- 1. Bathroom and design radiators**
- 2. Stoves and accessories**

**Is looking for sales opportunities in your territory market
(wholesales, skilled sellers, respectively producers).**

**Kontakt: NERIA a.s., Jaroslav Stachovic,
email: stachovic@neria.cz**



SAVING WATER AND ENERGY

RaES - Energy Centre

CZ – Brno

Czech Republic

Tel: +420 737 769 324

email: info@raes.cz

http: www.raes.cz

RaES - Energy Centre joins the global campaign to reduce consumption of potable water and recommends to use:

Antilime Czech SAVERS OF DRINKING WATER

CZECH PRODUCT, Czech invention protected by patent utility designs across Europe

SAVINGS 20 – 40 %, Investment return: 3 – 6 months

Mounting antilime water savers on basin lever mixers or shower hoses will provide you water and energy savings from 20 to 40 %.

The water savers has one huge advantage: water flow rate can be changed to an optimal value easily and the unique antilime system provides an effective protection from a scale settling. The key is the shape of plastic parts made out of heavy-duty material KEPITAL 30-03 NATUR and increasing the speed of water flow in the first chamber of water saver. In the second chamber water flow gets a spin and whirls inside a water saver. Those two chambers prevent scale from settling inside. System of chambers creates underpressure which causes suction of air into a water. The result of this conception is that the water flowing from a faucet does not flow as a full cylinder – it just seems that way visually. Water drops creates cylinder with an empty space inside (hollow cylinder). Our water savers are demanded all over the world. Reduction of hot water consumption leads to saving of an expenses for energy (needed to warming-up a water).

SUITABLE FOR:

- hotels, boarding-houses, dormitories
- kindergartens, elementary and secondary schools, colleges and universities
- student hostels
- apartments and households
- buildings of public administration
- hospitals, medical institutions
- retirement homes
- spas, aquaparks, fitness centres, camps



Advantages

Equipping faucets and shower hoses with our products reduce a water flow from **16-18 litres/minute** to **4, 6, 8 or 14 litres/minute for sinks** (depends on needs of a customer and setting of an water savers) without lowering user comfort. Regular water rate of **showers** is **20-25 litres/minute** and our water savers can lower the rate to **10, 12 or 14 litres/minute**. User doesn't have feeling of little flow.

EXAMPLES OF ECONOMY based on REFERENCES from our projects in Czech Republic:

Retirement home – social area, dtto hospital

Consumption per year: 3 561,43 m³
 Expenses per year: 25 603 €
 Budget: 1 105,20 €
 Measured savings: **29,3 %**
 Savings per year: 7 501,74 €
 INVESTMENT RETURN: **1,8 months**



RA6 22
rotary



RA6 24
rotary

Apartment house, dtto hotels, hostels, dormitories

Apartment house in Brno consisting of **46 apartments** equipped with an aerators for faucets and showers, WC-STOPS for toilets.

Budget: 1 437,70 €, average/apartment 31,30 €
 Measured savings: **23,35 %**
 Savings for the whole building: 9 149,60 €
 Average savings of an apartment per year: 198,90 € (water costs + energy needed to warm-up a water)
 INVESTMENT RETURN: **58 days**

SCHOOLS – kindergartens, elementary and secondary schools, colleges and universities, administration buildings

Example of elementary school

Consumption per year: 2 166 m³
 Expenses per year: 10 647,94 €
 Budget: 5 640,34 €
 Savings: **20 %**
 Savings per year: 2 129,60 €
 INVESTMENT RETURN: **5,2 months**

NOTE: Savings of expenses depends on a water prices and a prices of energy in each country.
 Economy can be calculated only with knowing these prices.

Export pricelist EXW 2010

TYPE		Basic discount Euro/pc	2 500 pcs Euro/pc	5 000 pcs Euro/pc
RA6 22 antilime water savers	4, 6, 8, 14 lit / min	1,50	1,35	1,20
RA6 24 antilime water savers	4, 6, 8, 14 lit / min	1,50	1,35	1,20
RA6 22/24 universal antilime water savers	4, 6, 8, 14 lit / min	1,60	1,45	1,30
RA6 22 rotary antilime water savers	4, 6, 8, 14 lit / min	2,70	2,60	2,50
RA6 24 rotary antilime water savers	4, 6, 8, 14 lit / min	2,70	2,60	2,50
RA10 shower head flow restrictor	8, 10, 12, 14 lit / min	2,60	2,50	2,40
WC-stop		2,60	2,50	2,40
Durable shower hose with adjustable flow rate	8, 10, 12, 14 lit / min	5,60	5,50	5,40

NOTICE: Water savers can not be used for unpressurized water heaters.

Please send your orders to producer Watersavers, s.r.o. by e-mail:

watersavers@setricevody.cz

Copy of the order please send also to: info@raes.cz



Postal address:

FitCraft Production a.s.

Bludovice 141
CZ-741 01 Nový Jičín
Czech Republic

Tel: +420 556 770 241

Fax: +420 556 770 251

email: info@fitcraftproduction.cz

http: www.fitcraftproduction.cz

FitCraft Production a.s.

FitCraft Production s.r.o. was established in 1999 primarily as a developer and producer of photovoltaic modules. Following continuous growth the company became a joint-stock company (a.s.) in 2008. In 2009 FitCraft Production a.s. reached net revenues of 1,1 billion CZK (44 mil EUR) and in 2010 net revenues increased 110% to 2,3 billion CZK (92 mil EUR). Today the company employs 90 people.

REN POWER CZ a.s., a member of Czech Coal a.s., has a significant share in FitCraft Production a.s.

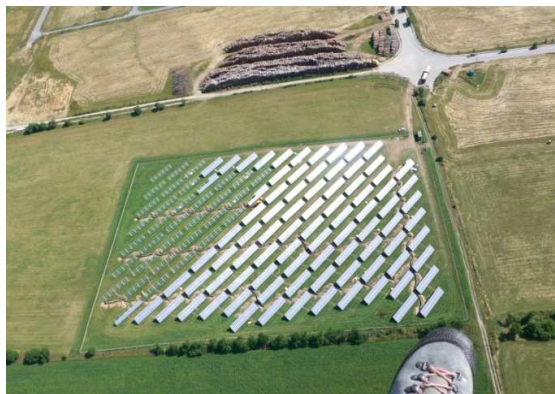
FitCraft Production a.s. produces photovoltaic modules from high-quality wafers. Every modul is verified for its performance and efficiency in certified testing rooms.

Standard modules are constructed with tubular aluminium frames with an effectiveness of 270 and 280 Watts and comply with ISO certificates.

FitCraft Production a.s. has a close cooperation with the converter producer KACO to specifically adapt converters for the modules in order to achieve the maximum effectiveness.

Company also constructs photovoltaic power stations and in 2010 installed electrical capacity of 40 MWp. Every photovoltaic power station is equipped with the latest sophisticated monitoring system.

FitCraft Production a.s. has recently started the development of new power generating equipment which might cover all the power consumption of one or more delivery points (private houses). With this expanding product line company focuses on expansion into foreign markets.





Postal address:

EkoWATT CZ s.r.o.

Švábky 2
CZ-180 00 Praha 8
Czech Republic

Tel: +420 266 710 247

Fax: +420 266 710 248

email: praha@ekowatt.cz

http: www.ekowatt.cz

EkoWATT is one of the main Czech energy, economy and living environment consultancy companies. It was established in 1990 as a non-profit organization. During EkoWATT's existence it has become a professional consulting and expertise company, whose accomplishments have been awarded both in the Czech Republic and internationally. Our branch offices in Prague and České Budejovice are among the most visited and well respected consultancies in the Czech Republic.

EkoWATT's target is to **support effective and nature friendly use of energy sources and to support the energy sustainability of buildings, municipalities and regions**. We provide high **quality and objective consulting**. We try to **help our clients to make better and more effective choices and decisions**. We aim to be a **confident and reliable partner** in the area of energy consulting. We **innovate** - we do things which do not exist yet.

To accomplish our mission we concentrate mainly on:

- Preparation of energy surveys, audits, studies and analysis of the relationships between energy, economics and the environment
- Professional support of energy saving projects and renewable energy sources
- Research and development in the areas of energy saving projects and renewable energy sources
- Consulting and environmental education, training and public enlightenment focusing on the effective and environmentally friendly use of energy
- Public relations

Our services are used by architects, designers, government and non-profit organizations, municipalities, schools and hospitals, research institutions, landowners, businessmen, agricultural and manufacturing companies, foreign and international institutions, other companies, research centers and, last but not least, the public.

In 1996 EkoWATT was awarded The Sasakawa Peace Foundation Environmental Award for the Ekologization and Optimalization of Energy Treatment in the Boží Dar urban area.

Main Values and Principles of Our Activity

Within our activities we always hold the principle of **objectivity** and **neutrality** - our consulting service is provided independently of commercial companies, we do not prioritize any of producers or sellers of technologies, we only follow the professional angle. We are proud of our **high levels of expertise, professionalism and reliability** - we pay attention to the high qualification, special skills and experience, work quality and systematic education of our workers and the acquisition of the latest information and knowledge in our field. One of the most important principles, that we follow, is that of **innovations** - we bring new propositions and approaches, we implement completely new projects and research programs.

No less important for us is the **internal culture** and **high quality** operation of our organization - EkoWATT CZ s. r. o. is a **holder of a quality certificate ISO 9001**. We also follow the **principles of environmental management and sustainable consumption** - EkoWATT CZ s. r. o is an **ISO 14001 certificate holder**.

AquaEnviro  aquaenviro	Mgr. Oto Pospíšil <i>executioner</i> Ječná 1321/29a, 621 00 Brno T: 541 634 258 M: 776 600 852 F: 541 634 392 aqua@aquaenviro.cz www.aquaenviro.cz
EnviWeb, s.r.o.  www.enviweb.cz	Radek Janoušek Mgr. Aristidis Franc Březová 6, Brno T: 606 355 895 T: 777 176 675 Radek.Janousek@enviweb.cz aristidfranc@hotmail.com www.enviweb.cz
ODES, s.r.o.  ZAŘÍZENÍ PRO EKOLOGII	Ing. Simona Kejdanová <i>Commercial section</i> Dolecká 14, 551 01 Jaroměř T: 491 815 038 F: 491 815 064 M: 724 056 688 simona.kejdanova@odes.cz www.odes.cz
CINK Hydro – Energy k.s. 	Bc. Petr Koňata <i>Commercial section</i> Lesov 125, 360 01 Sadov T: 353 579 154 F: 353 579 155 cink@cink-hydro-energy.com www.cink-hydro-energy.com
LINTECH solar 	Ing. Jiří Hrádek <i>Business manager</i> Klenčí pod Čerchovem 1 345 34 T: +420 379 482 144 F: +420 379 428 785 M: +420 602 442 507 jiri.hradek@litech-solar.cz www.litech-solar.cz
EKOPANELY s.r.o., Přelouč  EKOPANELY CZ	Jan Bareš T: +420 466 972 422 F: +420 466 972 602 bares@ekopanely.cz www.ekopanely.cz
CANABEST 	www.canabest.cz

LASKI, spol. s r.o. 	Ing. Zdenek Zapletal <i>Head manager</i> 798 17 Smržice 263 Z.Z.: 582305742 T/F: 582 305 740 zapletal@laski.cz , info@laski.cz www.laski.cz
House Technologies s.r.o.	Jiří Polánka, <i>director</i> Pod plynojemem 13,180 00 Praha M: 603 335 666 jpolanka@seznam.cz info@tesla-kotle.cz www.tesla-kotle.cz
Pěstujte topoly s.r.o. 	Leoš Mládek Naprstkova 275/4 110 00 Praha 1 M1: 731 114 697 M2: 776 277 272 info@pestujtetopoly.cz www.pestujtetopoly.cz
Reflex Zlín, spol. s r.o. 	Ing. Oldřich Jurčík <i>majitel a ředitel společnosti</i> T: +420 577 644 535 M: +420 602 762 225 reflex@reflex-zlin.cz
Royal Consulting 	Ing. Jan Vítovec Částkova 74, 326 00 Plzeň M: 737764154 honza.vitovec@centrum.cz www.royalco.cz
HOBAS Central Europe	Ing. Hana Staňková <i>Deputy Sales Director</i> Za Olšánkou 391 686 01 Uherské Hradiště T: 572 520 311 F: 572 555 661 Hobas.czech@hobas.com www.hobas.com



Postal address:

Trafo CZ, a.s.

Koutníková 208
CZ-503 01 Hradec Králové
Czech Republic

Tel: +420 492 112 452

Fax: +420 492 112 762

email: kostelnik@trafocz.cz

http: www.trafocz.cz



Trafo CZ, a.s. - About the company

Trafo CZ, a.s. deals with production, repairs, and sale of both new and renewed transformers. The company undertaking draw from long experience in this field of industry. The company started its new history in 1992 when it started cooperation with the Austrian company ELIN Weiz and assembly of the ELIN transformers (now Siemens Transformers Austria). Since 2000, the company has been an independent legal entity. The original name VČE - transformátory, s.r.o. was changed to Trafo CZ, a.s. in 2008. At the same time, the ownership structure has been changed and the company has become a joint stock company.

Products and services offered by Trafo CZ, a.s.

- Assembly and sale of ELIN hermetically sealed transformers or transformers with expansion tank (custom made)
 - Voltage levels: 6, 10, 22 and 35 kV
 - Rated power: 50, 100, 160, 250, 400, 630, 800, 1.000, 1.250, 1.600, 2.000 and 2.500 kVA
- Repairs and overhauls of transformers produced by any manufacturer (including the hermetically sealed ones) up to the rated voltage of 35 kV and rated power of 2.500 kVA
- Sale of renewed transformers for favourable prices; a number of transformers on stock
- Production of HDO coupling transformers
- Short- and long-term transformer lease
- Transformer oil filtration and drying by a MICAFIL mobile filtration station
- Transformer oil testing including external sampling
- Transformer oil sampling for PCB determination
- Protective equipment testing for low voltage and high voltage up to 123 kV (gloves, voltage testers, handling rods, phasing sets)
- Insulation states of transformer stations testing
- Ecological liquidation of old transformers including the waste transformer oil
- Smithery production for electrical power mains assembly
- Metal cutting, turning, milling and grinding
- Workshop repairs of turbines and accessories for small hydroelectric power plants
- Joinery and office furniture production





Postal address:

GINA Software s.r.o.

U Vodárny 3032/2a
CZ-616 00 Brno
Czech Republic

Tel: +420 776 375 462

email: info@ginasystem.com

http: www.ginasystem.com

Geographical INformation Assistant

GINA is an interactive map software for mobile devices permitting navigation in difficult terrain, teams coordination and effective exchange of geographic information. Due to its features, GINA is destined for [crisis management centres](#), [rescue teams](#) and other groups operating in difficult conditions. GINA is also used as an tool for effective [enterprise management](#). Thanks to the support of cadastral and satellite maps, GINA can also be used for geodetic surveys or for [urbanistic works](#).



GINA is easy to control, because the use of the application has been inspired by an ordinary paper map. Just like you can draw on a map with a pen and stick a pin of various colours in it, GINA enables you to insert your own drawings, and in place of pins, GINA offers pictograms. However, GINA allows much more — inserting photographs or short videos, made using an in-built camera. All this works in real time, so that inserted data are immediately available to all members of your team. The same map can be thus viewed by an unlimited number of users, regardless of their current location.

Postal address:

HL Propan s.r.o.

Orlovská 791/40
CZ-713 00 Ostrava
Czech Republic

Tel: +420 595 700 570

Fax: +420 595 781 059

email: info@hlpropan.cz

http: www.hlpropan.cz

Assortment	HL Propan s.r.o.	Assortment
 reducer vacuum up to 120 kW (power 150 kW)	 <i>products of new generation</i> LPG LOVTEC and MAGIC components are very modern, perfect technical designed products, comply with the highest conditions of quality and utility. Homologation according newest regulation EHK 67 R 01. Certification due to ISO 9001   Technical solution of Magic components is especially developed for new cars with OBD 2. Hot news is Magic 2 system with sequential injection with full on board diagnostic and smart system of control.	 Control unit – Lambda Tronic with accessories
 reducer electronic up to 120 kW (power 150 kW)		 Control unit – Lambda Basic with accessories
 reducer injection up to 120 kW (power 150 kW)		 Control unit Magic 2 for cars with OBD 2
 LPG valve		 interface Tronic and Magic for communication between PC and CU
 petrol valve		 various kind of switches (V1, E1, E2, ET1, ET2, VS1) for all CU
 filling unit with cover and all accessories		 Idle control units, Timer LT and more other special electronic units
 accessories and revision kits		
Kits:  vacuum		
 electronic		
 injection		

www.hlpropan.cz

HL Propan s.r.o. is a leading company on the LPG market in Czech republic. We are manufacturer of the LPG components [Lovtec](#), Magic - components available according newest European homologation 67R.01. Our main activity is everything about converting cars on LPG. From the year 1990 we are exclusive distributor of STAKO and GZWM company - producer of cylindrical and toroidal LPG [tanks](#). We also offer machining on modern CNC tooling. From the year 2004 we have [ISO 9001](#) quality certificate.

DT GASHELLAS (representative in Greece)

2nd km Kozani-Thess.

GR – 50 100 Kozani

Tel: +30 246 10 26725

Fax: +30 246 10 41550

email: info@dt-gashellas

http: www.dt-gashellas.gr



Postal address:

CristalOnLine

Malý Lán 950
CZ-696 62 Strážnice
Czech Republic

Tel: +420 518 321 611

email: info@cristalonline.com

http: www.cristalonline.com

We offer our clients from all over the world different kinds of unique exclusive products made of the so renowned Bohemia Crystal – such as crystal glasses, vases, decorative items, crystal figurines, crystal collectibles, crystal flowers, crystal costume jewellery, crystal pearls, the so popular and world known Czech strass, as well as luxurious cut crystal jewellery, and the Czech treasure – luxurious jewellery made of the Bohemian precious stone Czech Garnet. We offer the best quality hand-made Bohemia Crystal products made in the Czech Republic.

Our company was founded in 2005 as an exporting wholesale company with crystal glass nail files.

During the first two years we have established a stable distributing net in South America, but our customers come from the whole world: www.crystalglassfile.com.

Within the years we have started to produce our own files. Thanks to our designer's studio, we can offer you our own unique decorations of crystal glass nail files, some of which you will not find anywhere else, as well as you will find with us the greatest offer of the velvet nail sleeves/pouches in the world.

As we have been contacted by many people who wanted to buy solely one or two Bohemia crystal glass nail files and we have not been prepared for that we have decided to open an on-line shop in 2008, where we can attend all the individual persons where they can buy what they wish.



www.cristalonline.com

Postal address:

OGATIS – TRADE CONSULTANCY

4 Thoma Oikonomou str.
GR-115 25 Athens
Greece

Tel: +30 210 672 2879

Fax: +30 210 674 0483

http: www.ogatis.gr

CZECH PRODUCERS



ČESKÝ PORCELÁN
akciová společnost
DUBÍ





Postal address:

Antonín Hanus – Kolibky.cz

Bílý Potok 401

463 62

Czech Republic

Tel: +420 731 868 821

email: info@kolibky.cz

http: www.kolibky.cz

IČO (identification number): 71949542

We are the Czech producer of children's cradles and furniture.

Our baby cradles look very attractively due to their specific design, precise working and surface finish treatment which we can offer in 6 colour tones. Cradles are delivered in cartons dismantled, including the mattress, assembly tools and installation instructions. We are holders of the certificate EN 1130 in mechanical properties of cribs and cradles for domestic use.

All the materials we use are health unobjectionable – adhesives, mattresses, timbers. The cradles are made of 100% solid timber which we carefully choose before manufacturing so that it should be thoroughly dried-up and it should not have any wood defects. All these processing steps guarantee safer product for your baby.

We are able to make any cradle by your request in wide variety of tones and timber species. Do not hesitate to contact us for any further information – send us an e-mail: info@kolibky.cz or visit our web: www.kolibky.cz.



Postal address:

Technistone, a.s.

Bratří Štefanů 1070
CZ-500 03 Hradec Králové
Czech Republic

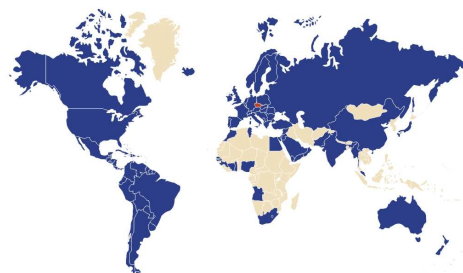
Tel: +420 495 714 711

Fax: +420 495 714 709

email: export@technistone.cz

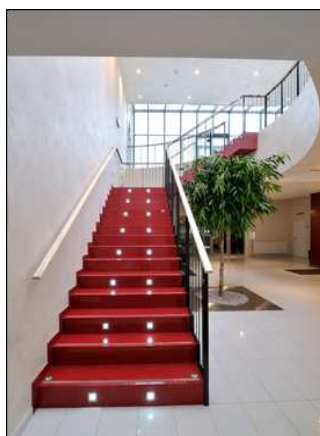
http: www.technistone.eu

Designed by nature
made for life



Technistone, a.s., is an innovative manufacturer and supplier of engineered stone. Thanks to its extensive experience with manufacturing of beautiful and high quality products and its wide distribution network, Technistone, a.s., supplies its products to more than 60 countries across 5 continents.

What are the main advantages of the Technistone® material?



Durability - The main features of the stone include extraordinary hardness, strength and resistance.

Luxurious appearance - Its glittering elegance will extend and brighten the interiors of buildings.

Diversity of colours - The wide range of colors and structures of the stone will attract even the most demanding clients.

Resistance - The stone surface is resistant to chemicals, abrasion, scratching and cutting.

Cleanness - Thanks to its non-porous surface the Technistone® stone meets the strict requirements for hygiene; another great feature is its easy maintenance.

Variance - Each stone is unique in its colouring and structure.

Translucency - In the product lines Translucent and Fresh.

Design - Possibility to apply one's own art ideas and original solutions.

Characteristics and properties

Technistone® is a compact, hard, non-porous, and composite product formed by inorganic polishable granules that are compacted together and the product is color-tuned by suitable pigments. After its treatment the product has a resistant surface of various sizes and it is supplied in the form of slabs, tiles or mosaic.

Technistone® is produced from high-grade natural raw materials (quartz, granite), mirror and glass granulates, a small amount of color pigments and high-quality polyester resin. The content of natural constituents forms more than 90 % of the product mass.

With respect to the applied raw materials and technology of production the Technistone® product achieves excellent properties especially due to its strength and compactness. The wide range of color shades, surface finishes, thicknesses and sizes always enables you to select a suitable solution combining the aesthetic and qualitative requirements of customers.

