

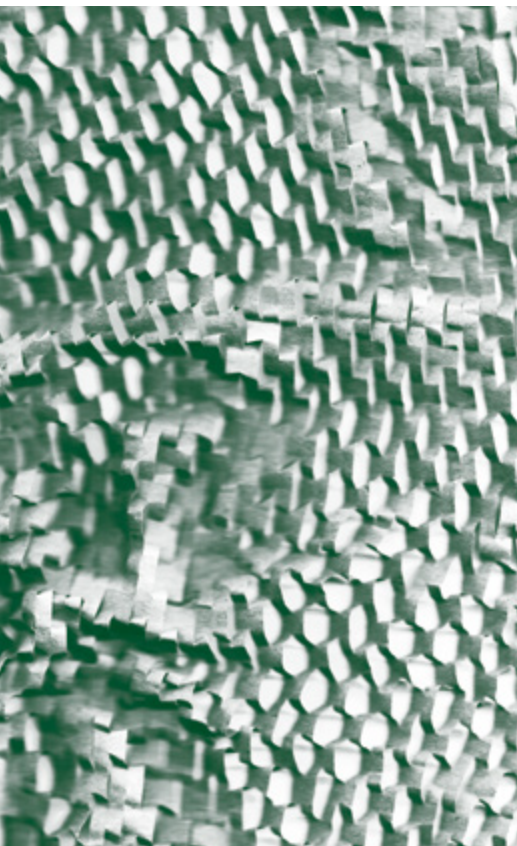
Tschechisches Zentrum
München

RADICAL Nature

8.–12.3.2023

Tschechisches Zentrum
München

***RADICAL* Nature**
8.–12.3.2023



The title of the exhibition “Radical Nature” is a play on words. It has two possible meanings, referring either to nature in all its uncompromising boldness, modified by the intervention of the artist, or to radical strength within the human character.

Both elements of this double meaning are entirely applicable to all the artists and works shown here.

Six distinctive personalities from the world of Czech jewelry present six different approaches to nature from their individual perspectives. At many points, approaches and views intersect and enter a dialogue with each other, but in each case the work is different, original.

For some of the artists, nature and its processes, sustainability and ecology are life-long concerns, while for two of them – Milan Nováček and Karel Votipka – this theme was a new departure.

HANUS LAMP is exhibiting for the first time at the Czech Centre in Munich during Munich Jewellery Week – SCHMUCK. In his work, he uses fragments of natural materials, creating casts from them and combining them with different metals and stones, replacing and reconstructing what has long disintegrated and been destroyed. He gives these pieces a new aesthetic

dimension, but one which is precisely based on the shape of the original natural objects.

As already mentioned, for *MILAN NOVÁČEK*, who trained as a goldsmith, the theme of preserving nature in its pure state was a challenge. He does not deny his connection with the craft of goldsmithing, but his sophisticated jewelry has a playfulness, a lightness of being and a joy in the discovery of natural materials – stalks from thornapple plants, bramble, or bamboo.

PAVKI OPOČENSKÝ has been returning periodically to natural materials and recycling in his work since the 80s. This time, he chose the antlers of a fallow deer he happened to find at a market, which lend themselves an approach that is not unlike the earthy, raw art of the Inuits.

Much as their work contrasts visually, *KRISTÝNA ŠPANIHELLOVÁ* and *JANA VAŘKOVÁ ŠTĚPÁNKOVÁ* are connected more than any of the other artists in the exhibition by the theme of living nature, its mystic dimension, and sustainability for future generations.

For Kristýna, this is also the first time her work has been shown at the Czech Centre during SCHMUCK. Her brooches are almost surreal, archetypal, telling stories of long-ago times, and the use of peat recalls both the solidity of the earth and its fragility.

Both of Jana’s collections shown here are highly conceptual and raise crucial environmental questions. The holes made by the destructive bark beetle form constellations, asking us what will be left of living nature for our children and our children’s children. The collection made from hay contains living seeds, preserved for the future – when we take off one of the necklaces, a whole meadow could grow from it. Another hope for future generations.

KAREL VOTIPKA is particularly known for his precise work with stones. This time, he worked with various fossils, which he literally brought to the surface of the stones, cleaned, and filled with life in his brooches.

The works of the artists in this exhibition complement each other, bringing together various perspectives on the possibility of working with natural materials in contemporary jewelry studios, including themes of recycling, sustainability, returning to our roots and hope for the future.

Julie Bergmann
March 2023

01



HANUŠ Lamr

*1976
born in Prague, Czech Republic

Education

1997–2002

Academy of Arts, Architecture
and Design in Prague,
Metalwork and Jewelry Studio
of Vratislav Karel Novák, CZ

Internships

2001 – Bezalel Academy of Arts
and Design, Jerusalem, IL

1998 – Burg Giebichenstein
Kunsthochschule, Halle, DE

Collections

Collection of the National Museum,
Prague, CZ

Collection of the Museum of Decorative
Arts, Prague, CZ

Private collection of Madeleine Albright

Awards

2020, 2019, 2013, 2010

Nomination Czech Grand Design Award

Solo exhibitions

2022

Noli me tangere, Chapel, Holyň, CZ
Resonance Gallery, Prague, CZ

2012

Hanuš Lamr – Jewelry,
Gustav Mahler's house, Jihlava, CZ

Group exhibitions

2014

Inhorgenta, Munich, DE

2010

From the Life of a Beetle,
Gallery KusKovu, Prague, CZ

2009

Jewelry and Photography,
Janský vršek Gallery, CZ

2007

Harvest in the Year of Capriciousness,
Galerie Rozehnal, Prague, CZ

2005

Florálie, Gallery of Czech Sculptures,
Prague, CZ

1997

Baroque, Miami University, Ohio, USA

04-05

STATEMENT

I was looking for my own way to express the processes of nature in greater depth. To materialize and complete what is unfinished. Cut off, split off, worn down by water, disintegrated and left behind. And to open and to shift it all to another dimension. A kind of space odyssey.

Fragments of nature, partly burned out of their form, cast in bronze and silver. And at the same time pieces preserved in their true material – these create certain archetypes for me. It reminds me of playing with the four elements. I was using fire to melt bronze and glass. But the little clay houses of Sceliphron curvatum were so perfect that I decided to display them as a relic. In order to imitate the fine fluff of silkweed seeds, ulexite crystals, which carry light and can be split lengthwise along the fibers, came in very handy for me.

Brooch

Stromboli flowers I.
2022
80 × 60 × 35 mm
bronze, topaz
lost wax technique

1 500 EUR



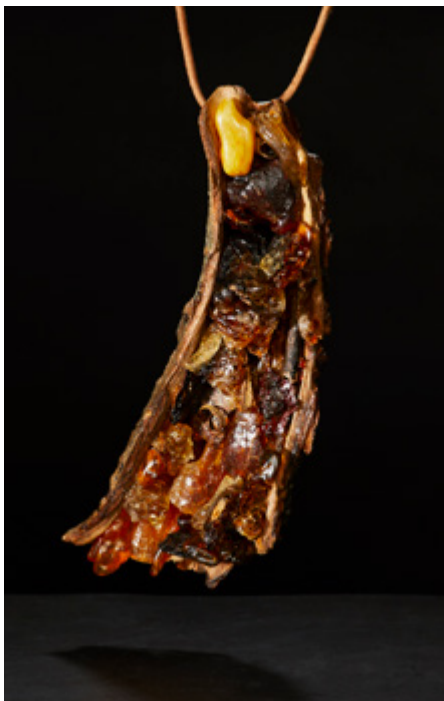
Photos of jewelry and portrait:
Andrea Thiel Lhotáková



Necklace
Stream of sap
2022
180 × 50 × 30 mm
bark, silver, ulexite, leather
mixed media

1 800 EUR

& Brooch



Necklace
The flesh of the tree
2022
200 × 100 × 50 mm
bark, resin, amber, silver, leather
mixed media

1 800 EUR

& Brooch



Necklace
Crescent
2022
150 × 130 × 70 mm
wood, silver
lost wax technique, hammering

3 000 EUR



Brooch

Pearl mills
2023
140 × 100 × 50 mm
pearl shell, silver, raw agate
cutting, hammering

1 500 EUR



Necklace

Parasite
2023
300 × 150 × 50 mm
aragonite, wood, silver
mixed media

2 500 EUR

Brooch

Stromboli flowers II.
2022
60 × 60 × 15 mm
bronze
lost wax technique

1 200 EUR





Necklace

Stone whistle
2022
240 × 230 × 50 mm
wood, silver, aragonite
mixed media

2 000 EUR



Necklace

Tornado
2022
190 × 70 × 60 mm
linden wood, gold leaf, gilded silver,
champagne diamond

4 000 EUR



Bracelet

Squirt
2022
80 × 70 × 50 mm
bronze, melted glass
lost wax technique, melting

2 000 EUR

Brooch

Empty houses
2022
75 × 60 × 25 mm
clay, bronze, gold leaf

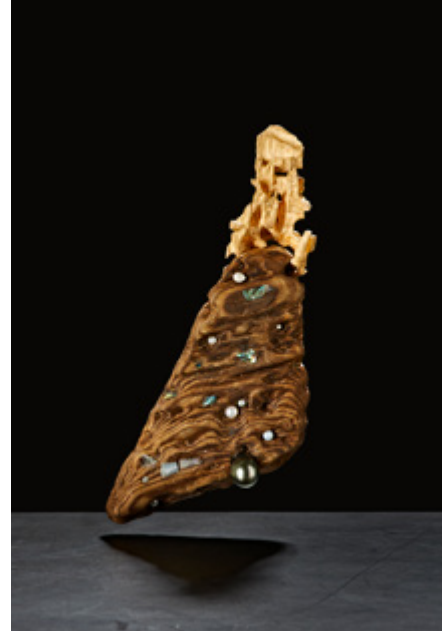
2 500 EUR



Brooch

Dancing wings
2022
100 × 100 × 40 mm
bronze, palladium leaf, ulexite

3 500 EUR



Brooch

Space odyssey
2023
15 × 55 × 35 mm
wood, bronze, mother of pearl,
freshwater pearls, Tahitian pearl

2 800 EUR

02



MILAN Nováček

*1973
born in Prague, Czech Republic

Education

1987–1992
School of Arts and Crafts, Prague, CZ
1999–2000
Charles University, Faculty of Physical
Education and Sport – Art therapy,
Prague, CZ

Competitions

2012
1st prize, Jewel of the Year
– CZECH OPEN, CZ
2002
1st Prize, Young Jewel,
Prague Design Center, CZ
2001
3rd in commercial category and 3rd
in art category, Young Jewel,
Brno Design Center, CZ
2000
2nd in commercial
and 3rd in art category, Young Jewel,
Brno Design Center, CZ

Group Exhibitions

2022
RINGS! By Helen Drutt, Houston Center
for Contemporary Craft, Houston, USA
RINGS! By Helen Drutt, Metal Museum,
Memphis, USA
Wooden Rhapsody, Czech Centre,
Munich, DE
2021
RINGS! By Helen Drutt,
The Galleries at Moore College of Art
& Design, Philadelphia, USA
2019
Prague Design Week, CZ
2018
Prague Design Week, CZ
1st prize best object
“Eä”, solo exhibition in KusKovu Gallery,
Prague, CZ
2017
Prague Design Week, CZ
2nd prize chosen by the public
2016, 2015, 2014
Prague Design Week, CZ
2011
“Road Mender”, exhibition,
Benešov Town Museum, CZ

AS YOU GROW

How do I work?

With my eyes closed, I follow the lines and shapes that flicker in the darkness behind my eyelids. This time I closed my eyes in the gardens and awoke among these gems. In this collection, you will find a mosaic in the brambles, proton showers of wild caraway in the thornapple pipes of a particle accelerator, and toy aeroplanes made from bamboo. It is wonderful to work together with nature.

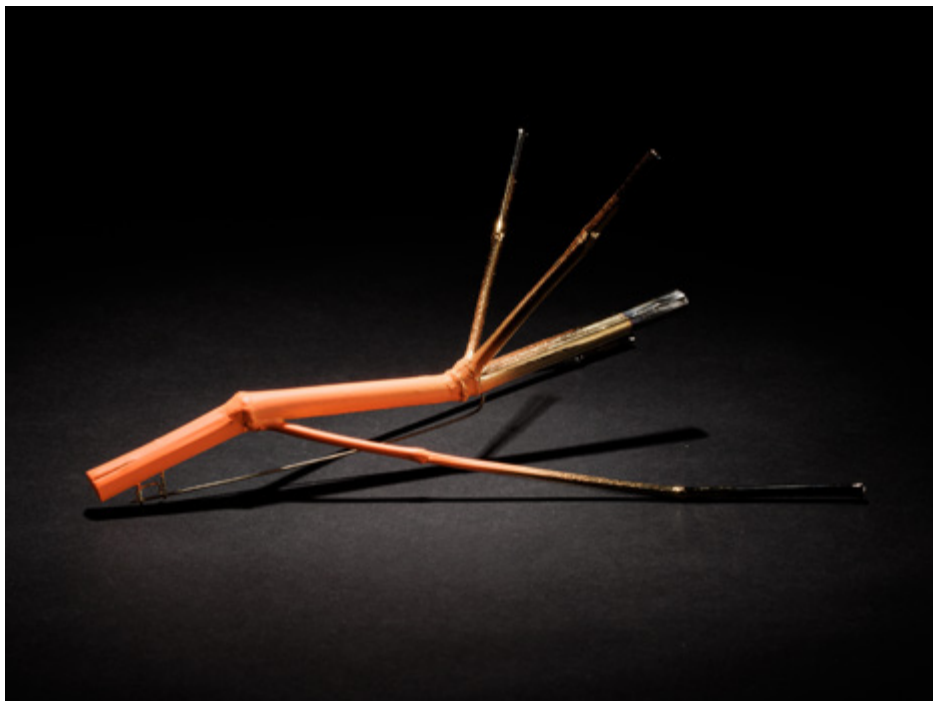
BROOCH

Bamboo # 1
2023
175 × 115 × 65 mm
electroplated
and painted bamboo, steel
grinding, cutting

1 300 EUR



Photos of jewelry and portrait:
Jan Faulkner



Brooch

Bamboo # 2
2023
165 × 120 × 75 mm
electroplated
and painted bamboo, steel
grinding, cutting

1 500 EUR



Brooch

Bamboo # 3
2023
195 × 110 × 70 mm
electroplated
and painted bamboo, steel
grinding, cutting

1 300 EUR



Brooch

Bamboo # 4
2023
190 × 90 × 50 mm
electroplated
and painted bamboo, steel
grinding, cutting

1 500 EUR



Brooch

Bamboo # 5
2023
150 × 140 × 80 mm
electroplated
and painted bamboo, steel
grinding, cutting

1 300 EUR



Brooch

Bamboo # 6
2023
150 × 130 × 70 mm
electroplated
and painted bamboo, steel
grinding, cutting

1 300 EUR



Brooch

Bamboo # 7
2023
165 × 120 × 65 mm
electroplated
and painted bamboo, steel
grinding, cutting

1 300 EUR



Brooch

Bamboo # 8
2023
165 × 105 × 50 mm
electroplated bamboo, steel
grinding, cutting

1 300 EUR



Brooch

Mosaic # 1
2022
65 × 15 × 15 mm
blackberry wood, steel
grinding, cutting

900 EUR



Brooch
Mosaic # 2
2022
110 × 15 × 15 mm
blackberry wood, steel
grinding, cutting
900 EUR



Brooch
Mosaic # 3
2022
175 × 15 × 15 mm
blackberry wood, steel
grinding, cutting
900 EUR



Brooch

CERN # 1
2023
110 × 50 × 30 mm
thornapple stalk,
galvanized wild caraway, steel
grinding, cutting

1 500 EUR



Brooch

CERN # 2
2023
65 × 15 × 15 mm
thornapple stalk,
galvanized wild caraway, steel
grinding, cutting

1 500 EUR



Brooch

CERN # 3
2023
170 × 45 × 45 mm
colored thornapple stalk,
galvanized wild caraway, steel
grinding, cutting

1 700 EUR

03



PAVEL Opočenský

*1954

born in Karlovy Vary, Czech Republic
lives and works in Prague

Education

1972

Secondary School of Applied Arts
(costume jewelry design),
Jablonec nad Nisou, CZ

1974

Secondary School of Applied Arts in
Turnov (design and processing of metals
and precious stones), CZ

Collections

National Gallery Prague, CZ

Metropolitan Museum, New York, USA

Smithsonian American Art Museum -

Renwick Gallery, USA

Museum of Arts and Design,

New York, USA

The Museum of Fine Arts,

Houston, USA

Neue Sammlung, Munich, DE

Rockefeller Foundation,

New York, USA

The Brooklyn Museum, New York, USA

Kunstindustrimuseet, Oslo, NO

Museum für angewandte Kunst,

Frankfurt am Main, DE

Museum of Decorative Arts

in Prague, CZ

Slovak National Gallery, Bratislava, SK

Moravian Gallery, Brno, CZ

Regional Museum in Turnov, CZ

Cooper-Hewitt Museum, New York, USA

International Sculpture Center,

Washington D. C., USA

North Bohemian Museum, Liberec, CZ

Museum of Glass and Jewelry,

Jablonec nad Nisou, CZ

Solo exhibitions (last 13 years)

2022

Close Encounters, Program Health Plus
Clinic, Prague, CZ

2021

Epidemic, DOX, Prague, CZ

2020

Epidemic, DOX, Prague, CZ
Epidemic, POUZARŠOVÁ Gallery,
Jablonec nad Nisou, CZ

2019

Nucleus, drawings,
Klatovy / Klenová Gallery, CZ
¾ of My Life, Goldschmiedehaus, Hanau, DE

2018

Nucleus, drawings, Sokolská 26 Gallery,
Ostrava, CZ

2017

Nucleus, drawings, Villa Pellé, Prague, CZ

2016

Nucleus, Schmuck und Zeichnungen,
Galerie Biró, Munich, DE

2014

Eroempathy, Galerie Září, Prague, CZ

2011

Ursakral, Klatovy / Klenová Gallery;
Yard Resort, Předboj u Prahy, CZ

2010

Colocircols, Galerie Biró, Munich, DE

03

STATEMENT

This series of jewelry cut from deer antlers and called "Face to Face" is inspired by primitive and Inuit art.

Technological processes of drilling and cutting create a confrontation with contemporary equipment.

The works present the faces of personal demons or animistic gods and ghosts.

Necklace

From the series Face to Face
2022
170 × 70 × 20 mm
deer antler
carving

2 200 EUR

& Brooch



Necklace

From the series Face to Face
2022
165 × 55 × 20 mm
deer antler
carving

2 200 EUR

& Brooch

Portrait photo: Gábina Fárová
Photos of jewelry: Lukáš Kuta



Necklace

From the series Face to Face
2022
21 × 35 × 20 mm
deer antler
carving

1 900 EUR

& Brooch



Necklace

From the series Face to Face
2022
145 × 70 × 20 mm
deer antler
carving

2 200 EUR

& Brooch



Necklace

From the series Face to Face
2022
145 × 70 × 25 mm
deer antler
carving

2 600 EUR

& Brooch



Necklace

From the series Face to Face
2022
180 × 55 × 25 mm
deer antler
carving

2 200 EUR

059-057



Necklace

From the series Face to Face
2022
185 × 50 × 20 mm
deer antler
carving

2 000 EUR

& Brooch



Necklace

From the series Face to Face
2022
140 × 10 × 20 mm
deer antler
carving

1 900 EUR



Necklace

From the series Face to Face
2022
205 × 55 × 20 mm
deer antler
carving

2 200 EUR

& Brooch



Necklace

From the series Face to Face
2022
170 × 125 × 20 mm
deer antler
carving

2 600 EUR

& Brooch

04

KRISTÝNA Španihelová

*1982
born in Valašské Meziříčí, Czech Republic



Education

2008 – 2011

Study Programs at the Doctorate Level at Academy of Fine Arts and Design in Bratislava – department of Metalwork and Jewelry, SK

2007 – 2007

Academy of Fine Arts and Design in Bratislava, department of Metalwork and Jewelry, SK

1997 – 2001

Academy of Fine Arts and Design in Bratislava, department of Metalwork and Jewelry, SK

Internship

2004 – Academy of Arts, Architecture, and Design in Prague – department of Metalwork and Jewelry, CZ

2003 – ALU, Ljubljana, department of Industrial Design, SI

Solo exhibitions

2022

ICH HÖRE DIE ERDE FLÜSTERN, OnyDveArt Gallery and Platform for womxn, Braunschweig, DE

2021

SLYŠÍM ŠEPTAT ZEM / "I hear the land whispering", Čin Čin Gallery, Bratislava, SK

2018

Materialita (with Mira Podmanická), Gallery X, Bratislava, SK

Solo exhibitions (last 14 years)

2017

Artificialia et Naturalia, Gallery NOVA, Bratislava, SK

2013

Cherchez la Femme festival, Nu Spirit, Bratislava, SK

2012

HEMOCITY, Gallery Eggplant, Bratislava, SK

2011

The Materialism of Being – dissertation show, Chapel of St John the Evangelist in the Franciscan Church and Monastery, Bratislava, SK

2010 – 2011

Three prices – The Materialism of Being, Gallery Slovak Art Union, Bratislava, SK

2010

Gloomy gardens (with Bety K. Majerníková), Bratislava City Gallery, Pálffy Palace, Bratislava, SK
Guns 'n' Bones (with Bety Majerníková), Gallery Langův dům, Frýdek-Místek, CZ

2009

Guns 'n' Bones (with Bety Majerníková), Gallery Satelit, Slovak design center, Bratislava, SK

2008

Jewelry is not just decoration, Museum Zubří, Zubří, CZ

STATEMENT

My artistic production explores the materiality of art jewelry through my personal feelings and experiences. I am concerned with the iconology, alchemy, and symbolism of materials, with their narrative aspect, and how they can be seen in terms of archetypes. I regard materiality as the true essence of our physical self. I am trying to reveal the real physicality of existence.

My work is inspired by nature and by the pulse of its continuous processes.

I hear the land whispering

For this collection, "I hear the land whispering", I created surreal compositions from peat set in earthy copper, where the sound of my soul resonates. I based it on my personal life and experience. I dove deep into my soul, and I'm going back to my roots. Peat symbolizes matter which absorbs everything, and which buries and at the same time gives birth to new life. This reflects my desire to gather and recycle natural objects, the need for contact with raw matter, and the compulsive need to capture the ephemeral. In prehistoric times, peat bogs had a specific ritual meaning. In the Bronze and Iron Ages, they were viewed as the homeland of ghosts. "I hear the land whispering" is about that which blooms in the darkness and buzzes nearby, where silence thunders and the souls of flowers dream in their melancholy...

The jewelry presented here embodies the sounds of poems. I try to find the hidden soul in matter.

Photos of jewelry and portrait:
Ondřej Bouška



Brooch

NARCISSUS
2021
80 × 50 × 25 mm
peat, copper, steel
mixed media

1 100 EUR



Brooch

ORCHID
2021
80 × 50 × 25 mm
peat, copper, steel
mixed media

1 100 EUR



Brooch I THINK ON
2021
80 × 50 × 25 mm
peat, copper, steel
mixed media

1 100 EUR



Brooch EARTH
2021
90 × 90 × 15 mm
peat, copper, steel
mixed media

1 100 EUR



Brooch HEAVEN AND EARTH
2021
90 × 90 × 15 mm
peat, mica, photocopper, steel
mixed media

1 600 EUR



Brooch AQUARIUS CONSTELLATION
2021
90 × 90 × 15 mm
peat, cubic zirconia, silver,
copper, steel
mixed media

1 600 EUR



Brooch SUN
2021
90 × 90 × 15 mm
peat, 23/4 gold leaf, copper, steel
mixed media

1 200 EUR



Brooch MOON
2021
65 × 65 × 20 mm
peat, silver leaf, copper, steel
mixed media

1 100 EUR



Brooch LABORATORY
2021
65 × 65 × 50 mm
peat, glass, seeds, copper, steel
mixed media

1 100 EUR



Brooch DANDELIONS
2021
65 × 65 × 50 mm
peat, glass, dandelion seeds,
copper, silver, steel
mixed media

1 100 EUR



Brooch BUTTERFLY EFFECT
2021
65 × 65 × 110 mm
peat, butterfly dust, glass, silver,
copper, steel
mixed media

1 100 EUR



Brooch MOTH
2021
65 × 65 × 50 mm
peat, glass, moth, silver, copper, steel
mixed media

1 100 EUR



Brooch UNDER THE MAGNIFYING GLASS 01
2021
65 × 65 × 60 mm
peat, beetle, magnifying glass, copper,
steel
mixed media

1 100 EUR



Brooch UNDER THE MAGNIFYING GLASS 02
2021
65 × 65 × 60 mm
peat, beetles, magnifying glass,
copper, steel
mixed media

1 100 EUR

05



JANA Válková Střílková

*1976
born in Opava, Czech Republic

Education

1995–2000

Department of Art Instruction
(Pavel Herynek), Faculty of Education,
Palacký University, Olomouc, CZ

1993

Vakhschool, Schoonhoven, NL

1991–1995

Secondary School of Applied Arts for
Jewelry Design and Precious Stones
(goldsmithing), Turnov, CZ

Collections

North Bohemian Museum in Liberec, CZ
Museum of Decorative Arts
in Prague, CZ
Museum of the Bohemian Paradise,
Turnov, CZ

Solo exhibitions

2016

Woman, Rose, Mold, Bone, Cit Gallery,
Bratislava, SK

2015

Beee [Baa], Září Gallery, Prague, CZ

2004

Jewelry and Photography (with Jiří
Štencek), U Prstenu Gallery, Prague, CZ

2003

3, Doxa Gallery, Český Krumlov, CZ

Hovězina [Cowhide], Rondo Gallery,
Hradec Králové, CZ
Šperkos [Jewelry], Café Patio, Opava, CZ

2002

Hovězina [Cowhide], U Jakoba Gallery,
Opava, CZ

2023

True to Form. A Cross-Section of
Contemporary Czech Jewelry, Ilias Lalaounis
Jewelry Museum, Athens, GR

2022

Universe, Museum of Glass and Jewellery,
Jablonec nad Nisou, CZ
28th International Symposium of Art
Jewellery Kremnica 2022, NBS – Museum of
Coins and Medals Kremnica, SK
Perdus et trouvés – 28. International Art
Jewellery Symposium Kremnica, Gallery
X, SK

2021

reGeneration 5, Museum of the Bohemian
Paradise, Turnov, CZ

2020

EROS Revival, POUZAR&OVÁ Gallery,
Jablonec nad Nisou, CZ

2019

SALON 6, Gallery of Vlastimil Rada,
Železný Brod, CZ
Jewelry Theme, Museum of Decorative
Arts in Prague, CZ

Group exhibitions (last 5 years)

05-1

HAY

My hay jewelry is a reaction to our high speed of life which disregards nature and its laws. This leads to a disruption of nature's wisdom.

For example: we are witnessing unnatural dry spells during the year. Droughts are endangering all life forms. I breed sheep so I know how much water is needed not only for drinking but also for good-quality pastures, and we can't replace grass!

Our ancestors behaved with greater respect towards nature. The grass was cut by hand just before it went to seed, and through the drying process the seeds had a chance to fall back on the meadow.

This encouraged biological diversity in nature. Hay means riches for people who keep animals. It means that their animals will survive the winter. It's priceless.

My jewelry is my statement. It shows my relationship to nature, and aims to draw attention to the great problems which are connected with disruptive ways of living in our modern society.

Portrait photo: Jaroslav Válek
Photos of jewelry: Martin J. Pouzar



Necklace

Meadow Seeds I,
from the collection Hay
2022
300 × 300 × 80 mm
hay, seeds, biodegradable glue,
flax fiber
shaping, pressing into a mold

1 200 EUR



Necklace

Meadow Seeds II,
from the collection Hay
2023
300 × 300 × 60 mm
hay, biodegradable glue, flax fiber
shaping, pressing into a mold

1 250 EUR

(Meadow Seeds I. and II.)

The components of the necklace are shaped like a larger version of meadow seeds. They are hollow and contain seeds from meadow grasses which can germinate if they are planted in the soil.

The person wearing these necklaces thus carries those seeds from place to place and can contribute to biodiversity.

FIELDS

The individual components of the “Fields” necklace represent the small fields which have been replaced, through centralized agriculture, with enormous tracts of land that are environmentally destructive. After taking off the necklace, it is possible to put the pieces together into one whole, representing the original (beneficial) way in which agricultural land was divided up.

Necklace

Fields, from the collection Hay
2021
300 × 300 × 100 mm
hay, biodegradable glue, flax fiber
shaping, pressing into a mold

1 250 EUR





Pendant

From the collection Hay

2023

120 × 80 × 70 mm

hay, biodegradable glue, flax fiber, leather
shaping, pressing into a mold

800 EUR



Pendant

From the collection Hay

2023

90 × 70 × 50 mm

hay, biodegradable glue, flax fiber, leather
shaping, pressing into a mold

700 EUR



Brooch

From the collection Hay
2023
100 × 85 × 60 mm
hay, biodegradable glue, flax,
fiber, stainless steel
shaping, pressing into a mold

800 EUR



Brooch

From the collection Hay
2023
115 × 7 × 55 mm
hay, biodegradable glue, flax fiber,
stainless steel
shaping, pressing into a mold

750 EUR



Brooch

From the collection Hay
2021
115 × 85 × 40 mm
hay, biodegradable glue, stainless steel
shaping, pressing into a mold

750 EUR



Brooch

From the collection Hay

2023

90 × 70 × 50 mm

hay, biodegradable glue, stainless steel
shaping, pressing into a mold

700 EUR



Pendant

From the collection Hay

2021

85 × 70 × 50 mm

hay, biodegradable glue, leather
shaping, pressing into a mold

700 EUR



Brooch

Heaven for Bark Beetles (engraving:
"Will our children's children get to see
the stars from a living earth?"),
from the collection Universe
2022

100 × 50 × 50 mm

tree bark, galvanized brass,
stainless steel

shaping, soldering, filing, polishing,
engraving

1 150 EUR

I found the fragment of spruce bark which
I used for the brooch "Heaven for Bark
Beetles" in a forest which had been
decimated by bark beetles. The holes made
by the bark beetle reminded me of stars
scattered in the sky. Among them
I could make out the constellations of the
Big Dipper and Cassiopeia. The lower part
of the brooch shows the characteristic
shape made by the larvae of this beetle.
On the back of the brooch, this inscription
is engraved: "Will our children's children
get to see the stars from a living earth?"



This brooch was inspired by a phenomenon in space: wormholes. These have been described theoretically and have a shape defined by scientists, which became the model for my second brooch. I created a delicate construction in this shape, which connects symbolically with the holes in the spruce bark and thus creates a parallel between the macrocosm and the microcosm.

Stoffwechsel

Brooch

Wormholes,
from the collection Universe
2022
140 × 90 × 40 mm
tree bark, galvanized brass,
stainless steel
shaping, soldering, filing

1 150 EUR



69-07

06



KAREL Votipka

*1964
born in Mělník, Czech Republic

Collections Education

1979–1982

Vocational School of Engineering
(toolmaking), Prague, CZ

1993–1995

Secondary School of Applied Arts
(goldsmithing), Turnov, CZ

Public

National Museum, Prague, CZ
Museum of Decorative Arts, Prague, CZ
North Bohemian Museum, Liberec, CZ
Museum of the Bohemian Paradise,
Turnov, CZ
East Slovak Museum, Košice, SK

private

Amber Museum-Gallery (Gintaro
Muziejus-Galerija), Vilnius, LT
Alice & Louis Koch Collection, CH
Ilias Lalaounis Jewelry Museum,
Athens, GR

Solo exh. (last 10 yrs.)

2021

All Shades of Grey, Nertovice diorites,
Dudycha Gallery, Litomyšl, Barbara
Gallery, Hradec Králové, D Gallery,
Prague, CZ

2020

Petrified Time, Museum of the Bohemian
Paradise, Turnov, CZ

2019

Petrified Time, Ateliér Asso, Prague, CZ

2017

Stones from the Ore Mountains
[Krušné Hory], Lara Gallery, Litomyšl, CZ
Kuskovu Gallery, Prague, CZ

2013

Jewelry from the Golden Mountains,
Museum of the Golden Mountains,
Zlaté Hory [Zuckmantel; Zlote Góry], CZ
Solo exhibition with a fashion show,
Technical Library, Hradec Kralové, CZ

2023

True to Form. A Cross-Section
of Contemporary Czech Jewelry,
Lalaounis Jewelry Museum, Athens, GR

2022

In Corona Times, Czech Centre,
Munich, DE

2021–2022

At the Edge, DOX, Prague, CZ

2020

GREEN, Galerie Handwerk, Munich, DE
Contemporary European Jewelry
from the Collections of the Museum
of the Bohemian Paradise in Turnov,
Gallery of Česká spořitelna, Prague, CZ

2019

International Silver Accessories Contest,
Tokyo, JP
Regeneration, Trutnov, CZ
Recyclo, Czech Centre, Munich, DE

Group exhibitions (last 5 yrs.)

68-69

The Mysterious Depths of Life

Don't say that I'm leaving. I'm still arriving.
I am billions of years old. From a human point of view, an eternity. I change shape and structure; I disappear and reappear in new forms.
Immortal.

I am life!

Portrait photo: Martin Šmok
Photos of jewelry: Lukáš Kuta



Brooch From the series
The Mysterious Depths of Life
2022
135 × 60 × 35 mm
paktong, stainless steel, balsa, clay,
trilobite *Reedops* sp.

2 200 EUR



Brooch

From the series
The Mysterious Depths of Life
2022
125 × 65 × 42 mm
paktong, stainless steel, balsa, clay,
trilobite *Reedops* sp., *Metacanthina*
issoumourensis

2 300 EUR

Brooch

From the series
The Mysterious Depths of Life
2022
115 × 35 × 15 mm
paktong, stainless steel, balsa,
clay, trilobite *Gerastos marocensis*,
Metacanthina issoumourensis

2 200 EUR



Brooch

Brooch

From the series
The Mysterious Depths of Life
2022
145 × 60 × 30 mm
paktong, silver, stainless steel,
balsa, clay, trilobite *Reedops* sp.,
Metacanthina issoumourensis

2 300 EUR



Brooch

From the series
The Mysterious Depths of Life
2022
105 × 100 × 40 mm
paktong, stainless steel, balsa, clay,
trilobite *Reedops* sp., *Gerastos*
marocensis, *Metacanthina issoumourensis*

2 500 EUR

147475



Brooch From the series
The Mysterious Depths of Life
2022
88 × 70 × 38 mm
stainless steel, silver, balsa, clay,
sharks' teeth

1 950 EUR

Brooch

From the series
The Mysterious Depths of Life
2022
120 × 60 × 45 mm
paktong, stainless steel, balsa, clay,
sharks' teeth

1 950 EUR



Brooch

From the series
The Mysterious Depths of Life
2022
120 × 60 × 45 mm
paktong, stainless steel, balsa, clay,
bivalve fossils *Strombus* sp. from
Bordeaux

1 950 EUR



Brooch

From the series
The Mysterious Depths of Life
2022
135 × 65 × 35 mm
paktong, stainless steel, balsa, clay,
bivalve fossils *Natica* sp., *Strombus* sp.
from Bordeaux

1 950 EUR

19879



Brooch

From the series
The Mysterious Depths of Life
2022
110 × 60 × 45 mm
paktong, stainless steel, balsa, clay, silver,
gold, trilobite *Gerastos marocensis*,
Metacanthina issoumourensis

2 700 EUR

Tschechisches Zentrum *München*

RADICAL Nature

8.–12.3.2023

Prinzregentenstr. 7
80538 München

Curator

Julie Bergmann
www.juliebergmann.cz

Graphic design

Studio Divize

English translation and copy editing

Lucy Duggan

Author of the exhibition's title

Frances Jackson

Paper

SH Recycling Grass 300g/m² (cover); Munken Lynx 120g/m²

Cover

Shredded cardboard

Printed and handbound by

Reformát

Number of copies

60

 TSCHECHISCHES ZENTRUM
MÜNCHEN

 S
D
I
Z
E

 ReFormát

HANUŠ Lamr

~~MILAN~~ Nováček

PAVEL Opočenský

KRISTÝNA Španihelová

~~JANA~~ Válková Střílková

KARL Votipka