

CZECH STARTUPS: INNOVATIVE AND SMART SOLUTIONS TO GLOBAL CHALLENGES



DOT Glasses has developed the world's first one-size-fits-all eyeglasses frames. In combination with its transformational lens concept and proprietary vision testing tools, DOT Glasses can help the 1 billion+ people in the world that need glasses but have no access to them. By simplifying the supply chain and removing the need of an optometrist from the process, DOT Glasses can deliver prescription glasses below 3 USD per pair. Our solution is already on over 1,000 faces in the world from our field trials in India, Angola and Greece. We're making a real impact by tackling the world's #1 health issue - because without glasses children can't learn and people can't earn.



Pikto Digital is a company delivering ecofriendly digital-focused solutions in the textile printing field. We manufacture machines that pretreat fabric, then dye it and subsequently fixate it using proprietary patented technology we developed in-house. We use zero amount of water while the traditional printing steps include steaming and washing the fabric after printing in order to ensure proper bonding of the chemicals. We waste minimum energy and also install our own recuperation unit to use every bit of heat and force it back to the machine. The whole process is operated by only one supervisor thanks to our clever proprietary software. Our basic machine will SAVE you 7 tons of chemicals, 65 tons of water, 700 thousand kWh per one million square meters of fabric. Compared to the traditional stenters, you will SAVE at least 35% of energy!



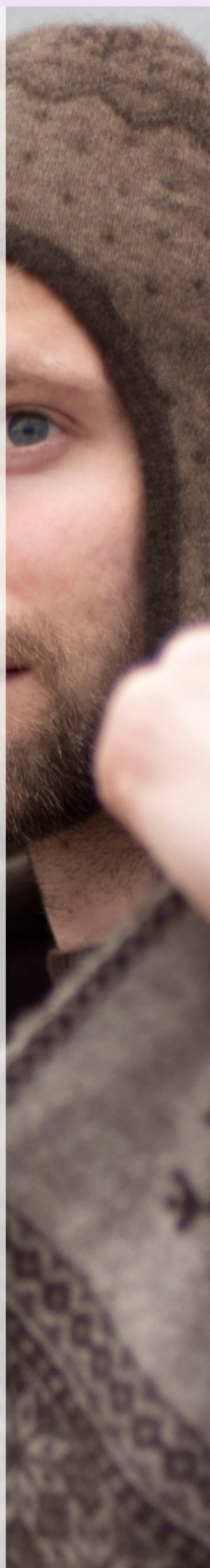
The original project of recycled bikes started as an NGO in 2013 in Prague, Czechia. Already in 2015, Rekola had 28,000 rides a year and in 2018 the number of rides have reached almost 800,000. The number of bikes exceeded 2000 and currently Rekola operates in 11 cities, where it offers its services to more than 230 000 registered users. Rekola bike-sharing has two main purposes that align with the core business operation. To build strong and sustain-able local communities as well as to contribute to slower the impact of climate change by providing sustainable micro-mobility solutions for both small and large cities. It is not only about the bikes, it is about changing the mindset. Since 2016 Rekola users have traveled 1,784,330 km in the Czech Republic and Finland and saved great portion of CO2. And it is only the beginning.



World from Space is an Earth Observation company bringing actionable insights from satellite data to end users. We focus of measuring specific Key performance indicators (KPIs) in the areas of urban environment, drought and vegetation monitoring. We provide urban adaptation consulting, including initial analysis, propose adaptation measures and monitor their results. We are building web-based tools for decision making based on spatial and temporal analysis with use of machine learning.



Yakmere, is a nomad brand that is turning natural waste into luxury clothing pieces. Sustainable and green is what we stand for. Nomads and city dwellers alike want to keep the balance of the nature, and as nomads from Mongolia, we found a way to connect the both cultures through sustainable fashion. Yak wool is natural waste and we collect it from herders across Mongolian steppes and make 100% natural, zero waste, no chemicals luxury fiber that is soft, warm, and just so cozy! Unlike other natural fibers like cashmere or merino wool, our fiber does not overgraze the grassland nor does it pile or break. Join the journey to make green the new sexy fashion icon!



DOT Glasses
(a AAA Techlabs, s.r.o. company)
U Vojanky 9
Prague 5, 150 00
Czech Republic
Philip Staehelin
philip.staehelin@dotglasses.org
+420 739 212 212
www.dotglasses.org

Pikto Digital
Pikto Digital a.s.
Třída 1. máje 106/8
Poštorná 691 41 Břeclav
Czech Republic
Vladimir Hicak
info@pikto.digital
+420 703 474 378
+420 736 616 131
www.pikto.digital

Rekola
Rekola Bikes sharing s.r.o.
Tusarova 877/56
170 00 Praha 7
Czech Republic
+420 778 099 878
info@rekola.cz
www.rekola.cz/en/

World from Space
World from Space s.r.o.
Pellicova 624/3 Brno
Czech Republic
Jan Labohý
labohy@worldfrom.space
office@worldfrom.space
+420 603 546 994
www.worldfrom.space

Yakmere
Prikip 834/4
Zabrdovice 60200 Brno
Czech Republic
Eja Batbold, CEO/founder
of Yakmere
Batbold@yakmere.com
+420 703 484 795
www.yakmere.com